

[Nov-2017 Dumps Reliable 80q JN0-647 Exam Dumps From PassLeader For Free Download (Section A)]

New Updated JN0-647 Exam Questions from PassLeader JN0-647 PDF dumps! Welcome to download the newest PassLeader JN0-647 VCE dumps: <https://www.passleader.com/jn0-647.html> (80 Q&As) Keywords: JN0-647 exam dumps, JN0-647 exam questions, JN0-647 VCE dumps, JN0-647 PDF dumps, JN0-647 practice tests, JN0-647 study guide, JN0-647 braindumps, Juniper Networks Certified Professional Enterprise Routing and Switching (JNCIP-ENT) Exam P.S. New JN0-647 dumps PDF: https://drive.google.com/open?id=0B-ob6L_QjGLpejBJUUI1X2NuU3M P.S. New JN0-102 dumps PDF: https://drive.google.com/open?id=0B-ob6L_QjGLpSmYwaTA1elpOUE P.S. New JN0-347 dumps PDF: https://drive.google.com/open?id=0B-ob6L_QjGLpYUVOTkxMmFWLUU

QUESTION 1 Your campus EX9200 core devices are highly oversubscribed on bandwidth and reporting massive dropped packets. To immediately address the issue, you decide to implement shaping on all interfaces. Which action will accomplish?

A. Apply the input-shape-rate 5G parameter to all interfaces under the [edit class-of service] hierarchy.

B. Define a CoS input traffic control profile with the shape-rate 5G parameter and apply it to all interfaces.

C. Define a CoS output traffic control profile with the shape-rate 5G parameter and apply it to all interfaces.

D. Apply the shape-rate 5G parameter to all interfaces under the [edit class-of service] hierarchy.

Answer: C

QUESTION 2 What allows non-Web enabled devices to access the network on a port configured for captive portal?

A. A MAC address white list can be configured on the switch to allow specific MAC addresses to bypass the captive portal process.

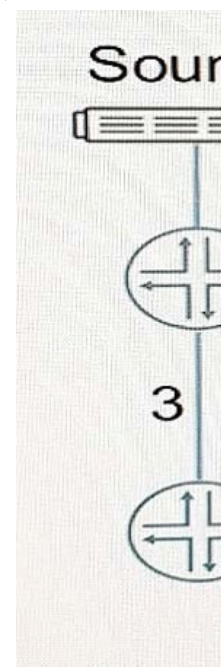
B. LLDP can be used to query the type of device that is attempting to access the network, and predefined device types can be allowed to bypass the captive portal process.

C. Captive portal can be configured to only prompt for credentials when HTTP or HTTPS traffic is requested on a port to allow on-HTTP enabled devices access to the network.

D. Authentication credentials for specific devices can be preconfigured on the switch for automatic authentication.

Answer: A

QUESTION 3 You have deployed sparse-mode multicast in your network using the IGP metrics shown in the exhibit.



Which path will (*,G) traffic follow from the source to the receiver before the (S,G) state is registered?

A. Source, R1, R4, R5, R6, Receiver

B. Source, R1, R2, R5, R2, R3, R6, Receiver

C. Source, R1, R2, R3, R6, Receiver

D. Source, R1, R2, R5, R6, Receiver

Answer: B

QUESTION 4 You are troubleshooting an OSPF adjacency issue between R1 and R2. What is the reason for the ExStart state shown in the exhibit?

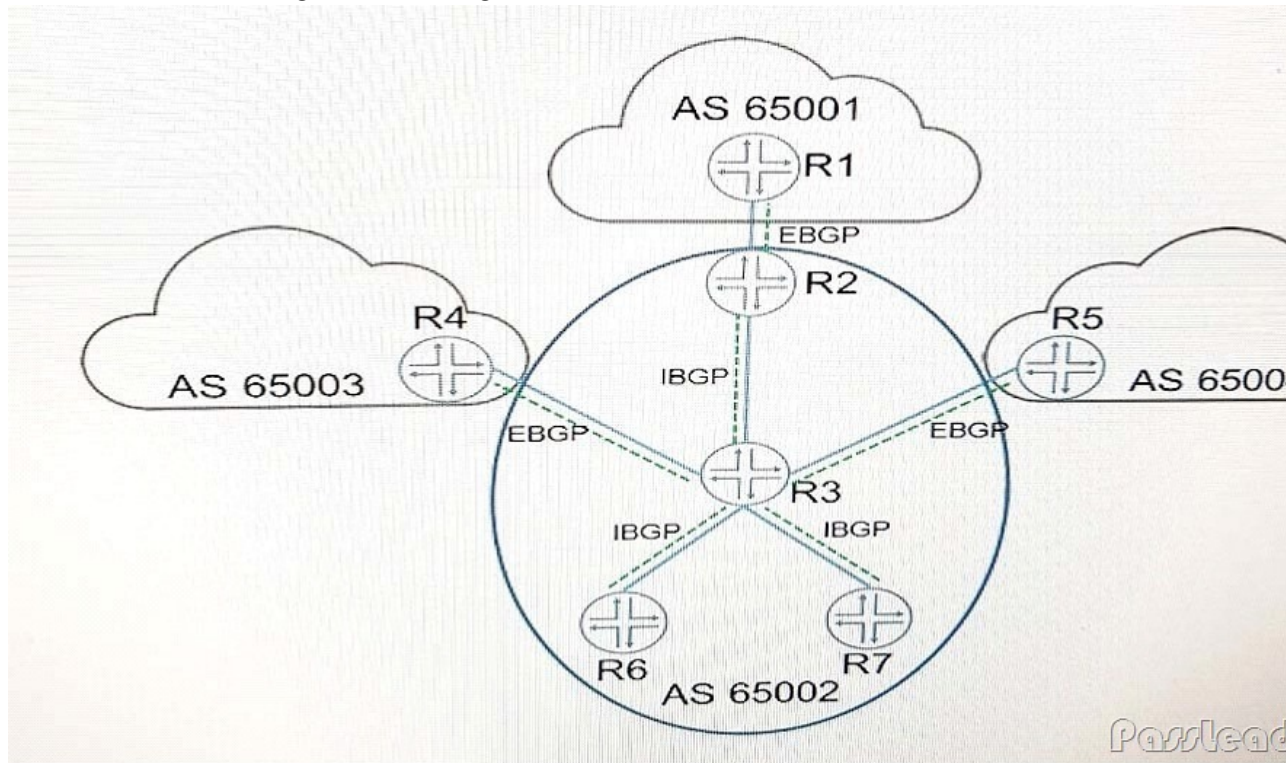
Passleader.com

```
user@R1> show ospf neighbor
Address      Interface    State      ID           Pri    Dead
10.222.0.21  ge-0/0/12.0 Full       10.222.1.4   128    34
10.222.0.13  ge-0/0/1.0   ExStart    10.222.1.3   128    31

user@R1> show ospf interface ge-0/0/1.0 detail
Interface    State      Area      DR ID        BDR ID
Nbrs
ge-0/0/1.0   BDR       0.0.0.1   10.222.1.3   10.222.1.5
1
Type: LAN, Address: 10.222.0.13, Mask: 255.255.255.252, MTU: 1500, Cost: 1

user@R2> show ospf interface ge-0/0/6.0 detail
Interface    State      Area      DR ID        BDR ID
Nbrs
ge-0/0/1.0   BDR       0.0.0.1   10.222.1.5   10.222.1.3
1
Type: LAN, Address: 10.222.0.13, Mask: 255.255.255.252, MTU: 1500, Cost: 1
```

A. R2 was elected as the designated router. B. R1 was elected as the backup designated router. C. R1 and R2 are using the same IP address. D. The MTU is not the default on R1 and R2. Answer: C QUESTION 5 Router R1, in peer AS 65001, advertises routes to R2 using EBGP. R2 advertises the routes learned from R1 to R3 using IBGP. Referring to the exhibit, to which routers will R3 advertise the BGP routes received from R2?



A. R6, R7 B. R4, R5, R6, R7 C. R4, R5 D. R2, R4, R5, R6, R7 Answer: C QUESTION 6 Referring to the exhibit, which statement is true?

```
user@R1> show ospf database extensive
OSPF link state database, area 0.0.0.100
Type      ID                Adv Rtr          Seq            Age      Opt    Cksum      Len
Router  10.100.1.1        10.100.1.1      0x80000531    166     0x22   0xfc35     36
Bits 0x2, link count 1
Id 10.100.0.2, data 10.100.0.1, Type Transit (2)
TOS count 0, TOS 0 metric 10
Aging timer 00:57:13
Installed 00:02:42 ago, expires in 00:57:14, sent 00:02:40 ago
Router 192.168.129.200 192.168.129.200 0x8000015a    548     0x2    0x517e     84
Bits 0x2, link count 5
Id 192.168.128.0, data 255.255.255.0, Type Stub (3)
TOS count 0, TOS 0 metric 1
Id 10.100.0.2, data 10.100.0.2, Type transit (2)
TOS count 0, TOS 0 metric 1
Id 10.100.2.1, data 10.100.2.1, Type transit (2)
TOS count 0, TOS 0 metric 1
Id 10.100.3.1, data 10.100.3.1, Type transit (2)
TOS count 0, TOS 0 metric 1
Id 192.168.129.0, data 255.255.255.0, Type Stub (3)
TOS count 0, TOS 0 metric 1
Aging timer 00:50:51
Installed 00:09:05 ago, expires in 00:50:52, sent 00:09:03 ago
Router *192.168.135.138 192.168.135.138 0x800001c3    2687    0x2    0x2b08     60
Bits 0x0, link count 3
Id 10.100.3.1, data 10.100.3.2, Type transit (2)
TOS count 0, TOS 0 metric 1
Id 10.100.2.1, data 10.100.2.2, Type transit (2)
TOS count 0, TOS 0 metric 1
Id 192.168.135.138, data 255.255.255.0, Type Stub (3)
TOS count 0, TOS 0 metric 0
Gen timer 00:05:12
Aging timer 00:15:12
Installed 00:44:47 ago, expires in 00:15:13, sent 00:44:45 ago
Ours
```

A. R1 is an ASBR. B. R1 has the 8 bit set. C. R1 is a backbone router. D. R1 is an ABR. Answer: A QUESTION 7 Which two statements are true about PIM source-specific multicast (SSM)? (Choose two.) A. The receiver DR builds a source-base tree to the RP. B. (S,G) is always used. C. A Different group address must be used by each source. D. IGMPv3 is required. Answer: BD QUESTION 8 You are configuring MSTP to prevent loops in your Layer 2 network. After applying the configuration, you notice that MSTO is not working correctly. Referring to the exhibit, what is causing the problem?

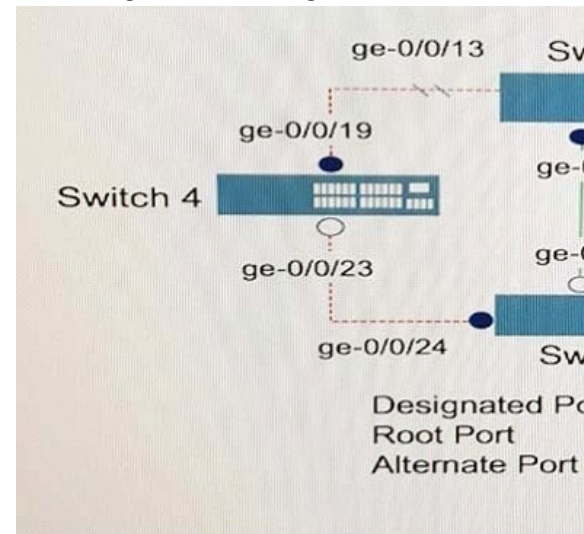
```
user@switch-1> show spanning-tree mstp configuration
MSTP information
Context identifier      : 0
Region name             : L2-MSTP
Revision                : 1
Configuration digest    : 0x8edc0c323967409ec011c3858a3802cf

MSTI member VLANs
0 0-10, 13-14, 16-4094
1 11, 15
2 12

user@switch-2> show spanning-tree mstp configuration
MSTP information
Context identifier      : 0
Region name             : L2-MSTP
Revision                : 1
Configuration digest    : 0xbe0284d20f4d46a8da239674094f78a

MSTI member VLANs
0 0-10, 13-4094
1 11
2 12
```


A. Too many VLANs have been defined. B. Context identifier must be specified.
C. MSTI-to-VLAN mappings must be the same. D. Incorrect revision number is used. Answer: C
QUESTION 9 A customer on MSTI-2 was isolated due to a physical link outage on Switch 5's ge-0/0/32 interface. Referring to the exhibit, which corrective action would solve this problem?

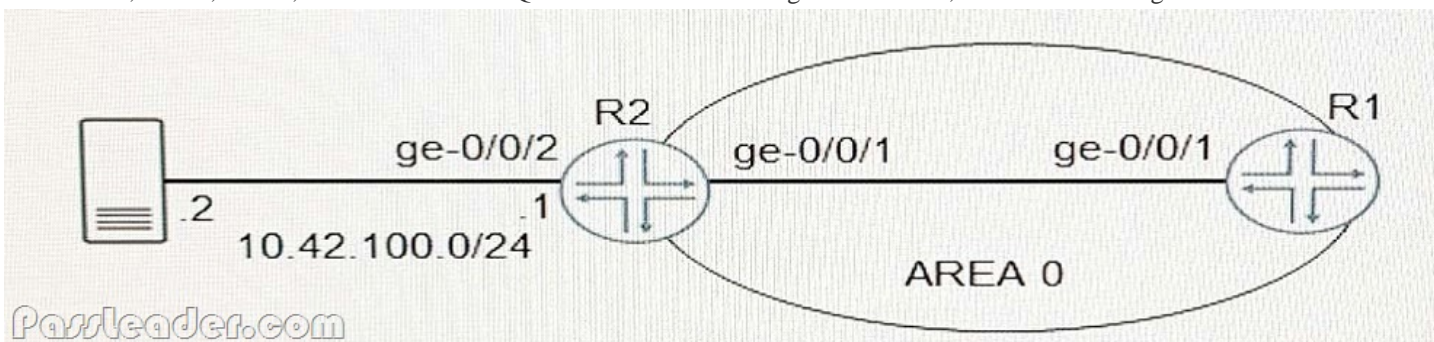


A. Replace the link between Switch 5 and Switch 6 with a 10 Gbps link. B. Implement the CIST on all switches. C. Move the root bridge for MSTI-2 to Switch 6.
D. Add MSTI-2 to all interfaces on Switch 5. Answer: D
QUESTION 10 Which two statements about MVRP are correct? (Choose two.) A. MVRP monitors interfaces using VSTP and dynamically creates VLANs as necessary. B. MVRP PDUs are sent to other switches as periodic intervals.
C. MVRP can propagate dynamic VLANs created on one switch to another switch.
D. MVRP is enabled by adding trunk ports under the [edit protocols mvrp] hierarchy. Answer: BD
QUESTION 11 Which three databases are used by the Dijkstra algorithm? (Choose three.) A. Tree database B. Link State database C. Candidate database D. MAC database E. Configuration database Answer: ABC
QUESTION 12 A customer requires that the switch responds to an ARP request only if the source and target IP address are on different subnets. Referring to the exhibit, how would you accomplish this task?

```
user@switch> show configuration
interfaces {
  ge-0/0/3 {
    unit 0 {
      proxy-arp unrestricted;
      family ethernet-switching;
    }
  }
}
```

Passleader.com

A. Create a static ARP entry for the host. B. Enable the no-gratuitous-arp request command under the interface hierarchy. C. Remove the proxy ARP setting and clear the entry.
D. Change the proxy ARP parameter setting to restricted. Answer: D
QUESTION 13 A customer needs to pass Layer 2 protocols between sites. Which protocol or standard would be required to implement connectivity on EX4300, EX3400, and EX2300 devices? A. Q-in-Q B. IGMP C. VPLS D. OSPF Answer: A
QUESTION 14 Referring to the exhibit, how is R1 learning the route from R2?

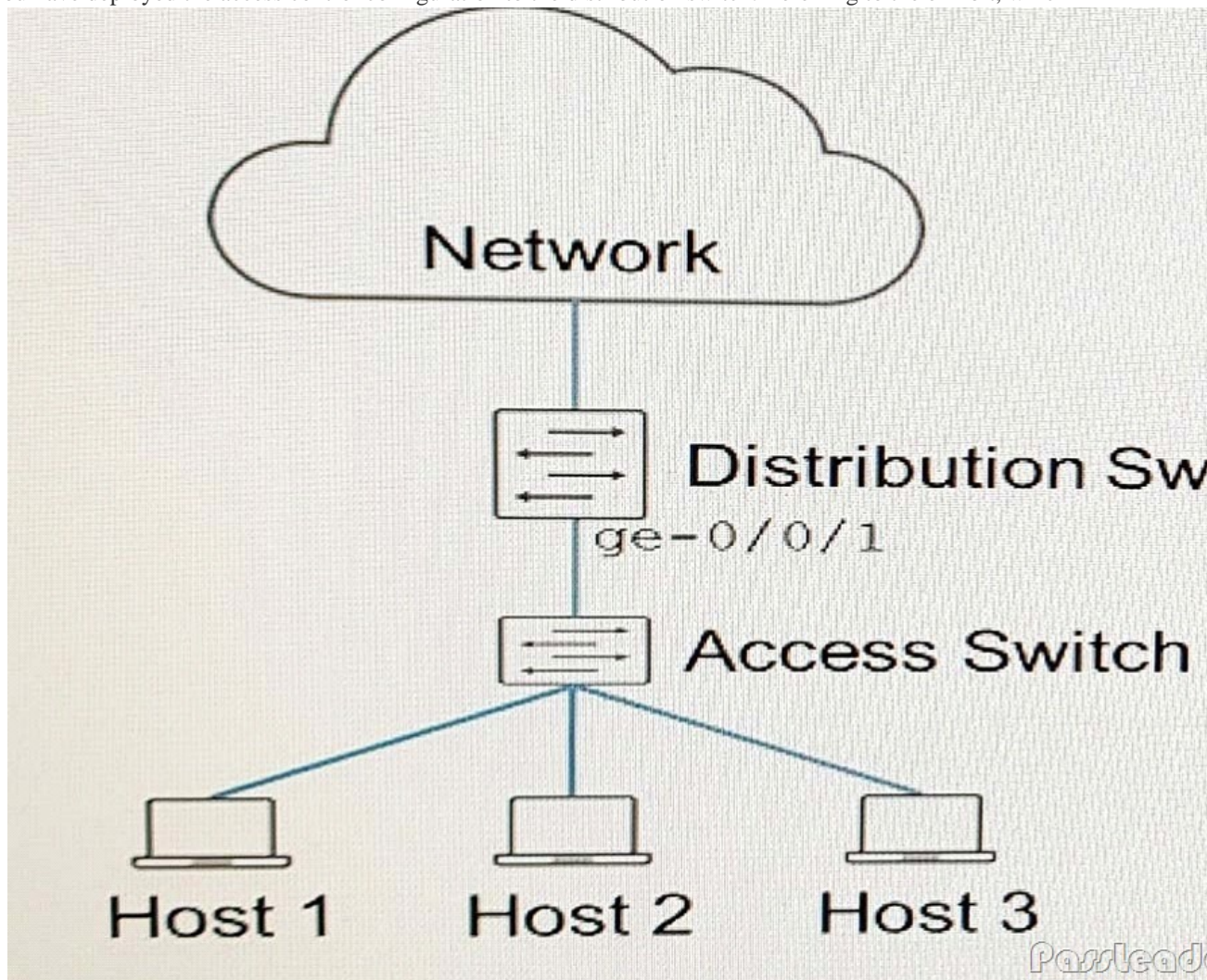


```
user@R1> show route 10.42.100.0
inet.0 : 61 destinations, 64 routes (61 active, 0 holddown, 0
hidden)
+ = Active Route, - = Last Active, * = Both

10.42.100.0/24    *[OSPF3/150] 00:00:11, metric 1, tag 0
                  > to 10.42.18.1 via ge-0/0/1.0
```

Passleader.com

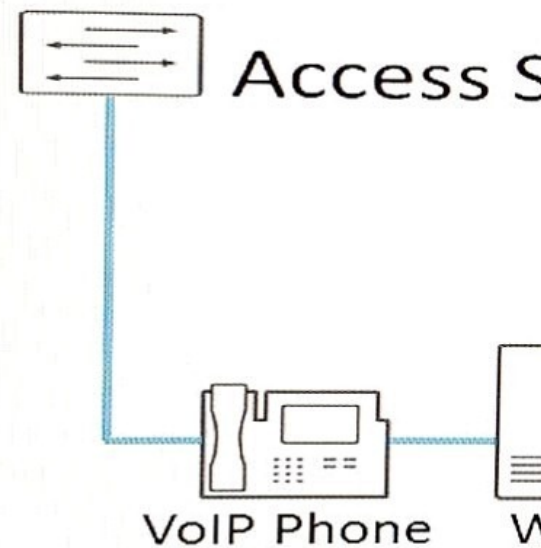
A. R2 has interface ge-0/0/2 configured in another area under OSPFv3. B. R2 has an export policy with external type 1 configured. C. R2 has interface ge-0/0/2 configured as a passive interface under OSPFv3. D. R2 has an export policy with external type 2 configured. Answer: B
QUESTION 15 You have deployed the access control configuration to the distribution switch. Referring to the exhibit, which statement is true?



```
{master: 0} [edit]
user@switch# show protocols dot1x
authenticator {
  interface {
    ge- 0/0/1.0 {
      supplicant single-secure;
    }
  }
}
```

Passleader.com

A. All hosts connected to the access switch will have access to the work after one device authenticates.
B. All hosts connected to the access switch require authentication to access the network.
C. Only the first host to authenticate will have access to the network, other hosts will be blocked.
D. All hosts connected to the access switch will have access to the network without authentication. Answer: C
QUESTION 16 Which statement is correct about MSTP? A. MSTP enables mapping multiple independent spanning-tree instances onto one physical topology. B. MSTP enables dynamic discovery of Layer 2 neighbors. C. MSTP dynamically manages VLAN registration in a LAN. D. MSTP uses stacked VLAN tags to extend a Layer 2 Ethernet connection between multiple sites. Answer: A
QUESTION 17 You have configured 802.1X single supplicant mode on the access switch. The VoIP phone does not support 802.1X authentication. Referring to the exhibit, which statement is true?



A. MAC bypass must be configured for the VoIP phone for this solution to work.
B. Authentication must be changed to multiple supplicant mode for this solution to work.
C. The VoIP phone will be able to communicate over the network after the workstation authenticates.
D. The VoIP phone will not be able to communicate over the network. Answer: C
QUESTION 18 You configured static mode power management on an EX4300 to provide PoE power to telephone and access point equipment. Which statement is correct regarding the PoE power budget? A. Power is budgeted to devices on a first come, first served basis as devices are connected. B. The power budgeted will be based on the device class connected to each port. C. Power is budgeted to a port even if no device is connected to the port. D. The power budgeted to ports will adjust to how much power a device actually uses. Answer: C
QUESTION 19 What information must you gather from the satellite device to provision a Junos Fusion Enterprise deployment on the aggregation device? (Choose two.) A. MAS address B. Serial number C. Software version D. Model number Answer: AB
QUESTION 20 You have just configured an OSPF adjacency between two routers. After you commit the configuration, you notice that your adjacency is not up. Referring to the exhibit, what would cause the problem?


```
user@R1> show log ospf-trace
Jun 13 09:29:40. 927461 Received OSPF packet od type and wire_length 1,
60
Jun 13 09:29:40. 927471 OSPF rcvd Hello 172.24.192.82 -> 224.0.0.5 (xe-
11/3/0.0 IFL 3170 area 0.0.0.0)
Jun 13 09:29:40. 927477 Version 2, length 48, ID 172.24.192.82, area
0.0.0.0
Jun 13 09:29:40. 927481 checksum 0x0, authtype 0
Jun 13 09:29:40. 927487 mask 255.255.255.254, hello_ivl 10, opts 0x12,
prio 128
Jun 13 09:29:40. 927492 dead_ivl 40, DR 172.24.192.82, BDR 0.0.0.0
Jun 13 09:29:40. 927497 neighbor 172.24.192.165
Jun 13 09:29:40. 927509 OSPF restart signaling: Received hello with LLS
data from nbr ip+ 172.24.192.82 id= 172.24.192.82
Jun 13 09:29:40. 927516 OSPF packet ignored: configuration mismatch from
172.24.192.82 on intf xe-11/3/0.0 area 0.0.0.0
Jun 13 09:29:41. 532396 rt_flash_update_callback: flash OSPF (inet.0)
start
```

Passleader.com

```
user@R1 show protocols ospf
traceoptions {
  file ospf-trace
  flag all;
}
reference-bandwidth 1000g;
area 0.0.0.0 {
  interface lo0.0 {
    passive;
  }
  interface ae0.0 {
    interface-type p2p;
    bfd-liveness-detection {
      minimum-interval 750;
      multiplier 3;
    }
  }
  interface xe-11/3/0.0 {
    interface-type p2p;
    bfd-liveness-detection {
      minimum-interval 750;
      multiplier 3;
    }
  }
}
[edit]
user@R2# show protocols ospf
area 0.0.0.0 {
  interface xe-2/1/0.0 {
    metric 220;
    priority 150;
    hello-interval 10;
    dead-interval 40;
  }
}
```

Passleader.com

A. You must configure lo on R2. B. You must configure hello and dead intervals on R1. C. You must configure an interface-type on R2. D. You must configure bfd on R2. Answer: C

QUESTION 21 You are asked to merge a RIP network with your OSPF network. As a first step, you establish connectivity between the RIP network and the OSPF network. The RIP network connects to an NSSA area. Which two statements are true in this scenario? (Choose two.) A. To share RIP routes with the OSPF network, an export policy will be required on the ABR. B. To share RIP routes with the OSPF network, an export policy will be required on the ASBR. C. By default, external OSPF routes have a higher route preference than RIP routes. D. By default, RIP routes have a higher route preference than external OSPF routes. Answer: BD

QUESTION 22 You created a firewall rule to protect the Routing Engine. After applying the rule, your OSPF adjacencies dropped. How would you solve this problem? A. Create a firewall term that allows IP protocol 89. B. Define a router ID under the [edit routing-options] hierarchy. C. Configure the

loopback interface under the [edit protocols ospf] hierarchy. D. Apply the firewall filter to the physical ports. Answer: A QUESTION 23 Where is the policy shown in the exhibit enforced?

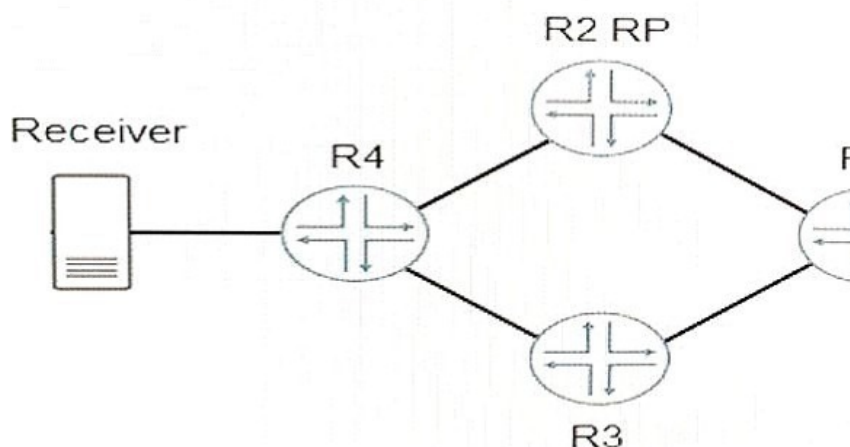
```
protocols {
  bgp {
    group customer {
      type external;
      peer-as 22;
      neighbor 1.2.3.4 {
        import customer-policy;
      }
    }
  }
}

policy-options {
  policy-statement customer-policy {
    term default {
      then {
        local-preference 500;
        next policy;
      }
    }
  }
}
```

Passleader.com

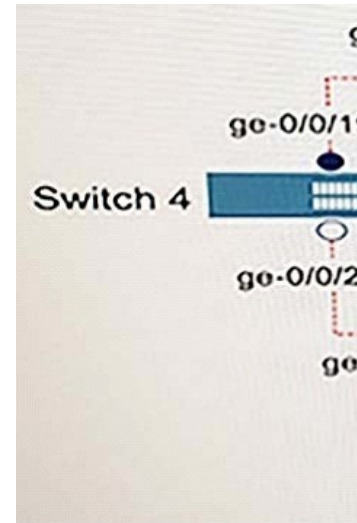
A. Between the RIB-LOCAL and the RIB-OUT tables. B. Between the RIB-OUT table and the BGP peer. C. Between the RIB-IN and the RIB-LOCAL tables. D. Between the BGP peer and the RIB-IN table. Answer: C QUESTION 24 You want to implement an RP in your PIM sparse mode environment, you are considering the advantages and disadvantages of the various RP election methods. In this scenario, which three implementation guidelines are correct? (Choose three.) A. The auto-RP method requires using two PIM dense mode groups from the 323/8 range. B. The auto-RP method includes the ability to maintain a backup RP. C. With the bootstrap method, the primary criterion for electing a BSR is priority value. D. When multiple election methods are implemented on a device, the static method is preferred. E. The static method requires configuration on all devices in the PIM domain. Answer: ABC QUESTION 25

The Receiver is attempting to join two different groups, one from each source. You want to ensure that load balancing is taking place. Referring to the exhibit, which statement is true?



A. R4 must have join-load-balance configured under protocol PIM. B. R2 must

have join-load-balance configured under protocol PIM. C. R1 must have join-load-balance configured under protocol PIM. D. R3 must have join-load-balance configured under protocol PIM. Answer: C
QUESTION 26 Switch 4 is rebooted as shown in the exhibit. Which statement is correct in this scenario?



A. CIST is reconverged. B. MSTI-1 is reconverged. C. CIST generates notification events. D. MSTI-2 is reconverged. Answer: B
QUESTION 27 What are two OSPF LSA types? (Choose two.) A. Stub B. Router C. Transit D. Network Answer: BD
QUESTION 28 You have a workstation and VoIP phone connected to port ge-0/0/1 on an access switch. Referring to the configuration shown in the exhibit, which statement is true?

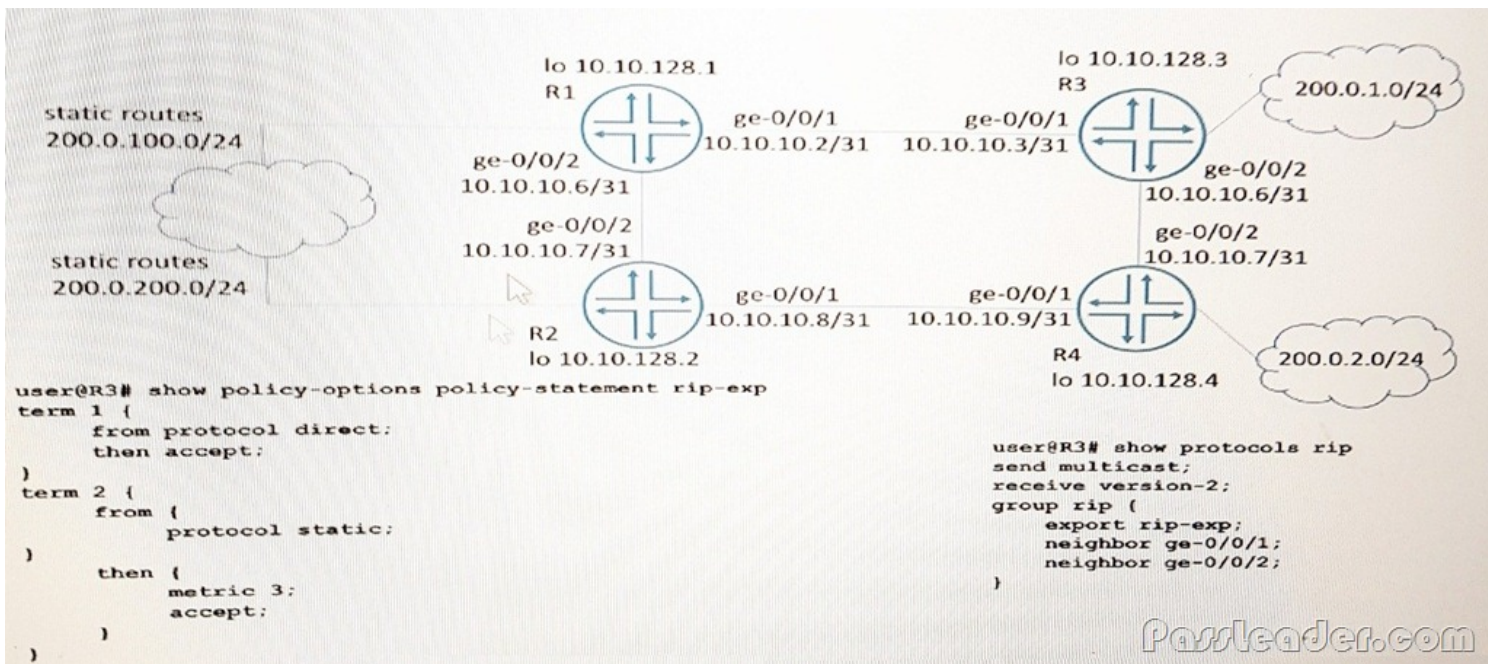
```
{master:0} [edit]
user@switch# show configuration
native-vlan-id 20;
unit 0 {
    family Ethernet {
        interface-mode
        vlan {
            members [20]
        }
    }
}

{master:0} [edit]
user@switch# show configuration

{master:0} [edit]
user@switch# show configuration

{master:0} [edit]
user@switch# show configuration
data {
    vlan-id 20;
    13-interface id
}
voice {
    vlan-id 30;
}
```

A. The phone will require a manual VLAN ID configuration. B. Untagged frames that enter the switch on interface ge-0/0/1 will be dropped. C. All frames that leave the switch on interface ge-0/0/1 will be dropped. D. The phone will not be able to communicate over the network. Answer: A
QUESTION 29 The ping command shows that connectivity of the 200.0.1/24 network to the 200.0.200.0/24 network exists. You notice that all the ping test results from various devices on 200.0.1.0/24 follow the same path even though equal cost paths exist to the 200.0.200.0/24 network. Referring to the exhibit, what is happening?



```
user@R3> show route protocol rip
inet.0: 10 destinations, 10 routes (10 active, 0 holddown, 0
hidden) + =
Active Route, - = Last Active, * = Both
10.10.128.2/32 192.168.2.0/30 200.0.2.0/24 224.0.0.9/32
*[RIP/100] 00:09:54, metric 2, tag 0> to 10.10.129.2 via ge-
0/0/0.1121
*[RIP/100] 00:09:54, metric 2, tag 0> to 10.10.129.2 via ge-
0/0/0.1121
*[RIP/100] 00:09:54, metric 4, tag 0> to 10.10.129.2 via ge-
0/0/0.1121
*[RIP/100] 00:10:57, metric 1 MultiRecv
```

A. Load balancing needs to be enabled for equal cost pathing to work. B. The rip-exp policy needs to be modified to advertise RIP routes. C. The RIP group must include the preference statement. D. RIPv2 does not support load balancing static routes. Answer: A QUESTION 30 Which statement is correct about CoS policers on Junos devices? A. Traffic that exceeds a policer's traffic profile can be dropped or assigned to a specific drop profile. B. A policer can assign in-profile traffic to a specific forwarding class. C. A policer does not alter in-profile traffic. D. Policers can be configured to buffer traffic that exceeds the policer's traffic profile. Answer: C Download the newest PassLeader JN0-647 dumps from passleader.com now! 100% Pass Guarantee! JN0-647 PDF dumps & JN0-647 VCE dumps:

<https://www.passleader.com/jn0-647.html> (80 Q&As) (New Questions Are 100% Available and Wrong Answers Have Been Corrected! Free VCE simulator!) P.S. New JN0-647 dumps PDF:

https://drive.google.com/open?id=0B-ob6L_QjGLpejBJUUI1X2NuU3M P.S. New JN0-102 dumps PDF:

https://drive.google.com/open?id=0B-ob6L_QjGLpSmYwaTA1elptOUE P.S. New JN0-347 dumps PDF:

https://drive.google.com/open?id=0B-ob6L_QjGLpYUVOTktxMmFWLUU