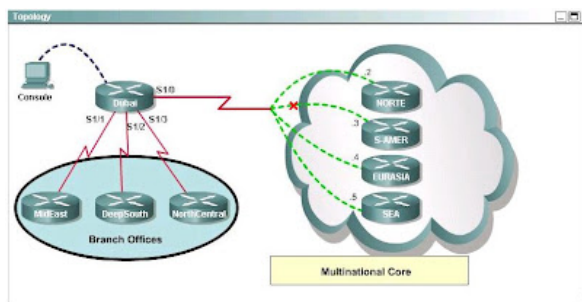


## CCNA(640-802) Hotspot: Topology Based Questions(2)



```
Dubai#sh frame-relay map
Serial1/0 (up): ip 172.30.0.2 dlci 704 (0x7B,0x1CB0), dynamic,
                broadcast,, status defined, active
Serial1/0 (up): ip 172.30.0.3 dlci 196 (0xEA,0x38A0), dynamic,
                broadcast,, status defined, active
Serial1/0 (up): ip 172.30.0.4 dlci 702 (0x159,0x5490), dynamic,
                broadcast,, status defined, active
Serial1/0 (up): ip 172.30.0.5 dlci 344 (0x1C8,0x7080), dynamic,
                broadcast,, status defined, active
Dubai#
```

```
Dubai#
interface FastEthernet0/0
no ip address
shutdown
!
interface Serial1/0
ip address 172.30.0.1 255.255.255.240
encapsulation frame-relay
no fair-queue
!
interface Serial1/1
ip address 192.168.0.1 255.255.255.252
!
interface Serial1/2
ip address 192.168.0.5 255.255.255.252
encapsulation ppp
!
interface Serial1/3
ip address 192.168.0.9 255.255.255.252
encapsulation ppp
ppp authentication chap
!
router rip
version 2
network 172.30.0.0
network 192.168.0.0
no auto-summary
!
line con 0
exec-timeout 0 0
line aux 0
line vty 0 4
password Tinet
login
!
```

Question 1: Note: host 172.30.4.4 is wrongly given in Question the correct host must be 172.30.0.4

Question #1

What destination Layer 2 address will be used in the frame header for host 172.30.4.4?

- ☐ 704
- ☐ 196
- ☐ 702
- ☐ 344

**Answers: 702** Explanation: The destination layer 2 address is a DLCI for frame-relay network. The destination host packet address is 172.30.0.4 corresponding DLCI is 702. This can be confirmed by looking at the **show frame-relay map** output which shows the frame-relay map statements for layer 3 address to its corresponding layer 2 address IP 172.30.0.4 is mapped to DLCI 702.

Question 2:

Question #2

A static map to the S-AMER location is required. Which command should be used to create this map?

- ☐ frame-relay map ip 172.30.0.3 704 broadcast
- ☐ frame-relay map ip 172.30.0.3 196 broadcast
- ☐ frame-relay map ip 172.30.0.3 702 broadcast
- ☐ frame-relay map ip 172.30.0.3 344 broadcast

**Answers: frame-relay map ip 172.30.0.3 196 broadcast** Explanation: The show frame-relay map command above output provides the dynamic mapping for S-AMER (.3 as per topology the complete address is 172.30.0.3) to DLCI 196. To create a static frame-relay map on dubai router to S-AMER we use the following command **Syntax: frame-relay map protocol protocol-address dlci [broadcast]** **frame-relay map ip 172.30.0.3 196 broadcast** Question 3:

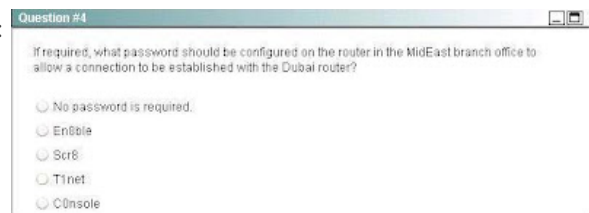


Question #3

Which connection uses the default encapsulation for serial interfaces on Cisco routers?

- ☐ The serial connection to the MidEast branch office.
- ☐ The serial connection to the DeepSouth branch office.
- ☐ The serial connection to the NorthCentral branch office.
- ☐ The serial connection to the Multinational Core.

**Answers: The serial connection to the MidEast branch office** Explanation: By seeing the partial running config provided for Dubai router ... We can identify what encapsulation type is configured on each interface Interface serial 1/0 : encapsulation frame-relay Interface serial 1/2 and serial 1/3 : Both have encapsulation ppp Interface serial 1/1: Has no config info on encapsulation type this determines the default encapsulation (HDLC) is not changed on this interface. Serial 1/1 is connection to MidEast branch office from Dubai router which has the default encapsulation. Question 4:



Question #4

If required, what password should be configured on the router in the MidEast branch office to allow a connection to be established with the Dubai router?

- ☐ No password is required.
- ☐ Enable
- ☐ Scr8
- ☐ T1net
- ☐ C0nsole

**Answers: T1net That is all, hope to be helpful for you. Best Luck for ur CCNA 640-802 Exam.** If you need the complete pass4sure test questions for 640-802 Exam, you can visit [Latest Pass4sure 640-802](#). (Pass4sure 640-802 Questions with explanation) may be it helpful for ur exam.