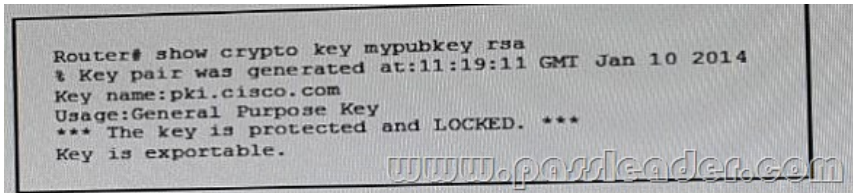


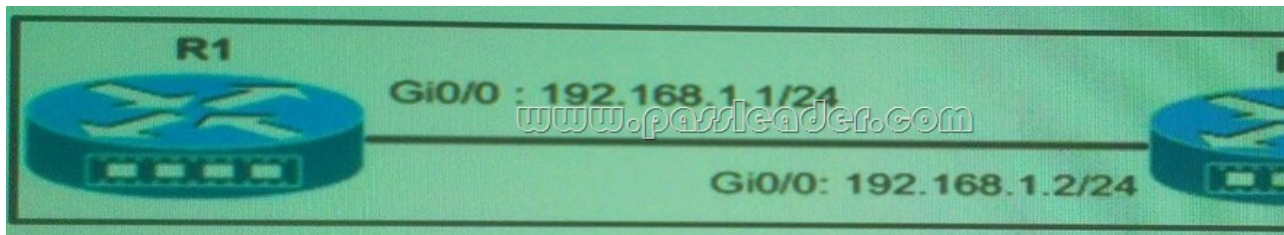
[Free-Dumps PassLeader VCE and PDF Dumps Free Download For 400-251 Exam (Question 91 – Question 120)]

New Updated 400-251 Exam Questions from PassLeader 400-251 PDF dumps! Welcome to download the newest PassLeader 400-251 VCE dumps: <http://www.passleader.com/400-251.html> (366 Q&As) Keywords: 400-251 exam dumps, 400-251 exam questions, 400-251 VCE dumps, 400-251 PDF dumps, 400-251 practice tests, 400-251 study guide, 400-251 braindumps, CCIE Security Exam p.s. Free 400-251 dumps download from Google Drive:

https://drive.google.com/open?id=0B-ob6L_QjGLpd3JLalNVS0VWbms QUESTION 91 What are two method of preventing DoS attacks on your network? (Choose two.) A. Increase the ICMP Unreachable message rate limit interval B. Implement shaping on the perimeter router C. Disable the ICMP Unreachable response on the loopback and Null0 interfaces D. Decreases the ICMP Unreachable message interval E. Implement CWBQ on the perimeter router Answer: AE QUESTION 92 What protocol does SMTPS use to secure SMTP connections? A. AES B. TLS C. Telnet D. SSH Answer: B QUESTION 93 Refer to the exhibit, you executed the show crypto key mypubkeyrsa command to verify that the RSA key is protected and it generated the given output. What command must you have entered to protect the key?

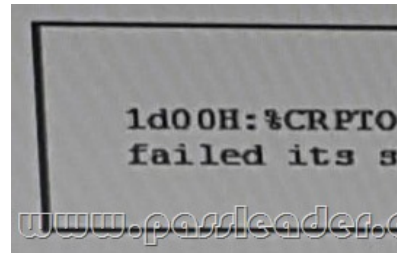


A. crypto key export rsa pki.cisco.com pern url flash: 3des CiscoPKI B. crypto key decrypt rsa name pki.cisco.com passphrase CiscoPKI C. crypto key import rsa pki.cisco.com pern url nvram: CiscoPKI D. crypto key zeroize rsa CiscoPKI E. crypto key lock rsa name pki.cisco.com passphrase CiscoPKI Answer: E QUESTION 94 All of these Cisco security products provide event correlation capabilities excepts which one? A. Cisco Security MARS B. Cisco Guard/Detector C. Cisco ASA adaptive security appliance D. Cisco IPS E. Cisco Security Agent. Answer: C QUESTION 95 Refer to the exhibit, which configuration prevents R2 from become a PIM neighbor with R1?

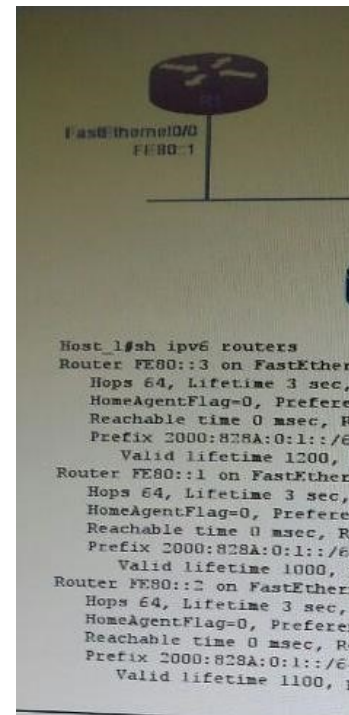


A. Access-list 10 deny 192.168.1.2.0.0.0.0 ! Interface gi0/0 Ippim neighbor-filter 1 B. Access-list 10 deny 192.168.1.2.0.0.0.0 ! Interface gi0/0 Ipgimp access-group 10 C. Access-list 10 deny 192.168.1.2.0.0.0.0 ! Interface gi0/0 Ippimneighbour-filter 10 D. Access-list 10 permit 192.168.1.2.0.0.0.0 ! Interface gi0/0 Ippim neighbor-filter 10 Answer: D QUESTION 96 Which two certificate enrollment methods can be completed without an RA and require no direct connection to a CA by the end entity? (Choose two.) A. SCEP B. TFTP C. manual cut and paste D. enrollment profile with direct HTTP E. PKCS#12 import/export Answer: CE QUESTION 97 Which two statements about the MD5 Hash are true? (Choose two.) A. Length of the hash value varies with the length of the message that is being hashed. B. Every unique message has a unique hash value. C. Its mathematically possible to find a pair of message that yield the same hash value. D. MD5 always yields a different value for the same message if repeatedly hashed. E. The hash value cannot be used to discover the message. Answer: BE QUESTION 98 Which three statement about VRF-Aware Cisco Firewall are true? (Choose three.) A. It can run as more than one instance. B. It supports both global and per-VRF commands and DoS parameters.

C. It can support VPN networks with overlapping address ranges without NAT. D. It enables service providers to implement firewalls on PE devices. E. It can generate syslog messages that are visible only to individual VPNs. F. It enables service providers to deploy firewalls on customer devices.
Answer: ADE QUESTION 99 Refer to the exhibit. What is the meaning of the given error message?

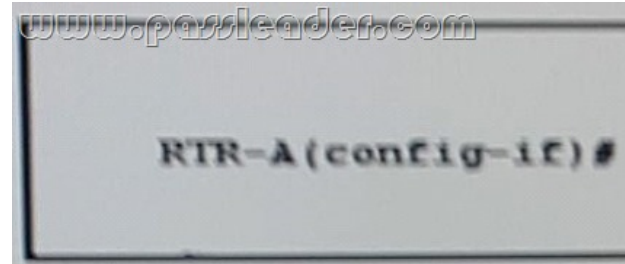


A. The PFS groups are mismatched. B. The pre-shared keys are mismatched. C. The mirrored crypto ACLs are mismatched. D. IKE is disabled on the remote peer. Answer: B QUESTION 100 Which two value must you configure on the cisco ASA firewall to support FQDN ACL? (Choose two.) A. A DNS server B. A Service policy C. An FQDN object D. A Class map E. A services object F. A policy map Answer: AC QUESTION 101 Refer to the exhibit. Which effect of this configuration is true?

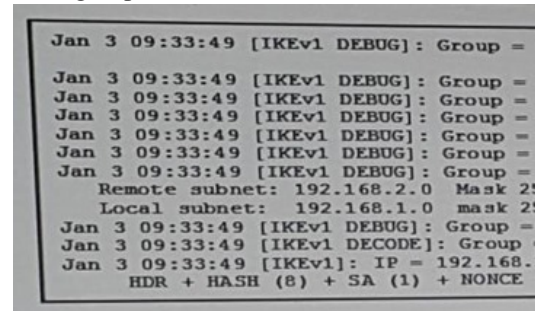


A. Host_1 learns about R2 and only and prefers R2 as its default router B. Host_1 selects R2 as its default router and load balances between R2 and R3 C. Host_1 learns about R2 and R3 only and prefers R3 as its default router D. Host_1 learns about R1,R2 and R3 and load balances between them E. Host_1 learns about R1, R2 and R3 and prefers R2 as its default router Answer: E QUESTION 102 Which statement regarding the routing functions of the Cisco ASA is true running software version 9.2? A. In a failover pair of ASAs, the standby firewall establishes a peer relationship with OSPF neighbors B. The ASA supports policy-based routing with route maps C. Routes to the Null0 interface cannot be configured to black-hole traffic D. The translations table cannot override the routing table for new connections Answer: C QUESTION 103 Which two statement about router Advertisement message are true? (Choose two.) A. Local link prefixes are shared automatically. B. Each prefix included in the advertisement carries lifetime information f Or that prefix. C. Message are sent to the micast address FF02::1. D. It support a configurable number of retransmission attempts for neighbor solicitation message. E. Flag setting are shared in the message and retransmitted on the link. F. Router solicitation message are sent in response to router advertisement message. Answer: AF

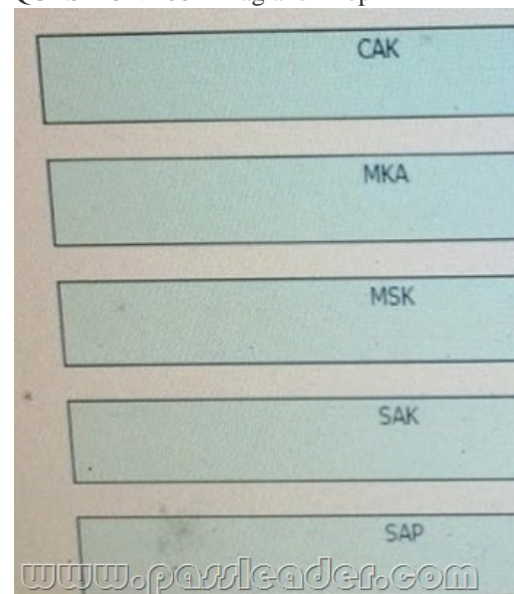
QUESTION 104 Refer to the exhibit. Which effect of this configuration is true?



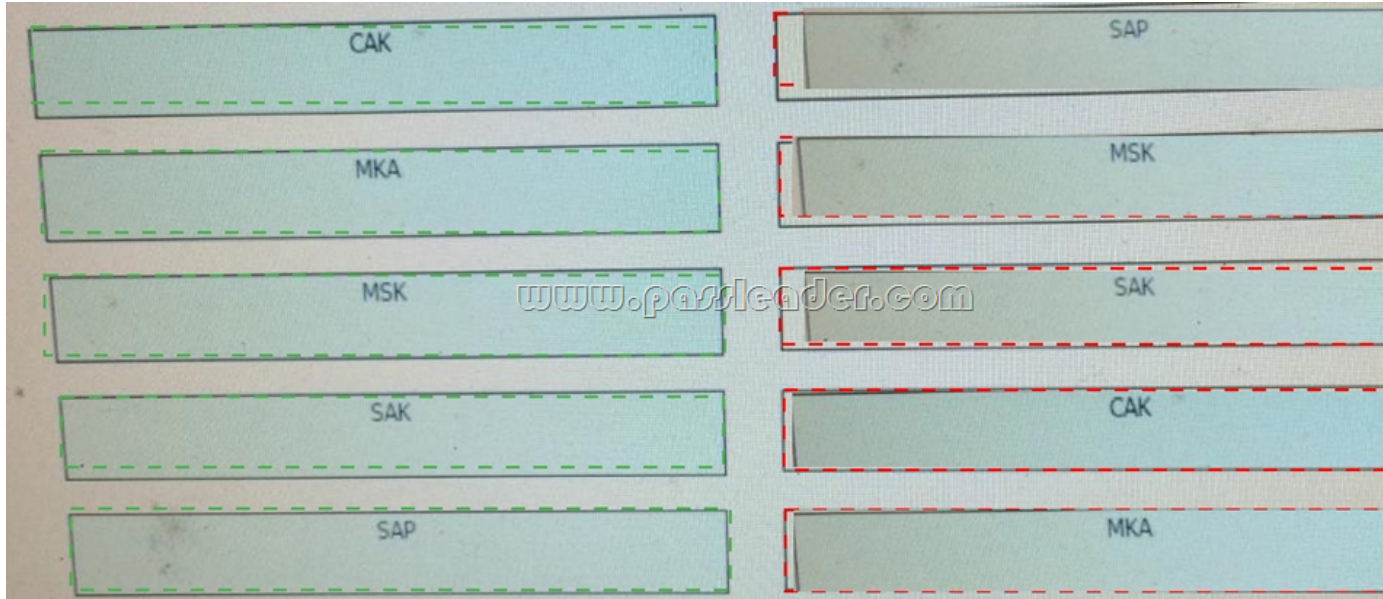
A. NUD retransmits 1000 Neighbor solicitation messages every 4 hours and 4 minutes.
B. NUD retransmits Neighbor Solicitation messages after 4, 16, 64 and 256 seconds.
C. NUD retransmits Neighbor Solicitation messages every 4 seconds.
D. NUD retransmits unsolicited Neighbor advertisements messages every 4 hours.
E. NUD retransmits four Neighbor Solicitation messages every 1000 seconds.
F. NUD retransmits Neighbor Solicitation messages after 1, 4, 16, and 64 seconds.
Answer: E
QUESTION 105 What are two features of cisco IOS that can help mitigate Blaster worm attack on RPC ports? (Choose two.)
A. FPM
B. DCAR
C. NBAR
D. IP source Guard
E. URPF
F. Dynamic ARP inspection
Answer: DE
QUESTION 106 Which two statement about the multicast addresses query message are true? (Choose two.)
A. They are solicited when a node initialized the multicast process
B. They are used to discover the multicast group to which listeners on a link are subscribed
C. They are used to discover whether a specified multicast address has listeners
D. They are send unsolicited when a node initializes the multicast process
E. They are usually sent only by a single router on a link
F. They are sent when a node discover a multicast group
Answer: BC
QUESTION 107 Refer to the exhibit. What IPSec function does the given debug output demonstrate?



A. DH exchange initiation
B. setting SPIs to pass traffic
C. PFS parameter negotiation
D. crypto ACL confirmation
Answer: B
QUESTION 108 Drag and Drop
Question Drag each MACsec term on the left to the right matching statement on the right.



Answer:

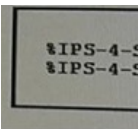


QUESTION 109 IANA is responsible for which three IP resources? (Choose three.) A. IP address allocation B. Detection of spoofed address C. Criminal prosecution of hackers D. Autonomous system number allocation E. Root zone management in DNS F. BGP protocol vulnerabilities Answer: ADE QUESTION 110 When you are configuring QoS on the Cisco ASA appliance. Which four are valid traffic selection criteria? (Choose four.) A. default-inspection-traffic B. qos-group C. DSCP D. VPN group E. tunnel group F. IP precedence Answer: ACEF QUESTION 111 Which two statements about the anti-replay feature are true? (Choose two.) A. By default, the sender uses a single 1024-packet sliding window B. By default, the receiver uses a single 64-packet sliding window C. The sender assigns two unique sequence numbers to each clear-text packet D. The sender assigns two unique sequence numbers to each encrypted packet E. the receiver performs a hash of each packet in the window to detect replays F. The replay error counter is incremented only when a packet is dropped Answer: BD QUESTION 112 You have configured a DMVPN hub and spoke as follows (assume the IPsec profile "dmvpnprofile" is configured correctly):

```
Hub:
interface Tunnel0
ip address 172.16.1.1 255.255.255.0
no ip redirects
ip nhrp authentication cisco
ip nhrp map multicast dynamic
ip nhrp network-id 10
ip nhrp holdtime 600
ip nhrp redirect
tunnel source FastEthernet0/0
tunnel mode gre multipoint
tunnel key 10000
tunnel protection ipsec profile dmvpnprofile
Spoke 1:
interface Tunnel0
ip address 172.16.1.2 255.255.255.0
no ip redirects
ip nhrp authentication cisco
ip nhrp map multicast 1.1.1.2
ip nhrp map 172.16.1.1 1.1.1.2
ip nhrp network-id 20
ip nhrp holdtime 300
ip nhrp nhs 172.16.1.1
ip nhrp shortcut
tunnel source FastEthernet0/0
tunnel mode gre multipoint
tunnel key 1000
tunnel protection ipsec profile dmvpnprofile
```

With this configuration, you notice that the IKE and IPsec SAs come up between the spoke and the hub, but NHRP registration fails. Registration will continue to fail until you do which of these? A. Configure the ipnhrp cache non-authoritative command on the hub's tunnel interface B. Modify the NHRP hold times to match on the hub and spoke C. Modify the NHRP network IDs to match on the hub and spoke

D. Modify the tunnel keys to match on the hub and spoke Answer: D QUESTION 113 Which of the following is one of the components of cisco Payment Card Industry Solution? A. Virtualization B. Risk Assessment C. Monitoring D. Disaster Management Answer: B QUESTION 114 Which two statements about the DH group are true? (Choose two.) A. The DH group is used to provide data authentication. B. The DH group is negotiated in IPsec phase-1. C. The DH group is used to provide data confidentiality. D. The DH group is used to establish a shared key over an unsecured medium. E. The DH group is negotiated in IPsec phase-2. Answer: BD QUESTION 115 Your IPv6 network uses a CA and trust anchor to implement secure network discover. What extension must your CA certificates support? A. extKeyUsage B. nameConstraints C. id-pe-ipAddrBlocks D. id-pe-autonomousSyslds E. F. Ia-ad-calssuers keyUsage Answer: B QUESTION 116 A server with Ip address 209.165.202.150 is protected behind the inside of a cisco ASA or PIX security appliance and the internet on the outside interface. User on the internet need to access the server at any time but the firewall administrator does not want to apply NAT to the address of the server because it is currently a public address, which three of the following command can be used to accomplish this? (Choose three.) A. static (inside,outside) 209.165.202.150 209.165.202.150 netmask 255.255.255.255 B. nat (inside) 1 209.165.202.150 255.255.255.255 C. no nat-control D. nat (inside) 0 209.165.202.150 255.255.255.255 E. static (outside,inside) 209.165.202.150 209.165.202.150 netmask 255.255.255.255 F. access-list no-nat permit ip host 209.165.202.150 any nat (inside) 0 access-list no-nat Answer: ADF QUESTION 117 Which three statements about RLDLP are true? (Choose three.) A. It can detect rogue Aps that use WPA encryption B. It detects rogue access points that are connected to the wired network C. The AP is unable to serve clients while the RLDLP process is active D. It can detect rogue APs operating only on 5 GHz E. Active Rogue Containment can be initiated manually against rogue devices detected on the wired network F. It can detect rogue APs that use WEP encryption Answer: ABD QUESTION 118 Which Cisco ASA firewall mode supports ASDM one-time-password authentication using RSA SecurID? A. Network translation mode B. Single-context routed mode C. Multiple-context mode D. Transparent mode Answer: B QUESTION 119 Refer to the exhibit. A signature failed to compile and returned the given error messages. What is a possible reason for the problem?



A. The signature belongs to the IOS IPS Basic category. B. The signature belongs to the IOS IPS Advanced category. C. There is insufficient memory to compile the signature. D. The signature is retired. E. Additional signature must be compiled during the compiling process. Answer: C QUESTION 120 Which command sequence can you enter to enable IP multicast for WCCPv2? A. Router(config)#ip wccp web-cache service-list Router(config)#interface FastEthernet0/0 Router(config)#ip wccp web-cache group-listen B. Router(config)#ip wccp web-cache group-list Router(config)#interface FastEthernet0/0 Router(config)#ip wccp web-cache group-listen C. Router(config)#ip wccp web-cache group-address 224.1.1.100 Router(config)#interface FastEthernet0/0 Router(config)#ip wccp web-cache redirect in D. Router(config)#ip wccp web-cache group-address 224.1.1.100 Router(config)#interface FastEthernet0/0 Router(config)#ip wccp web-cache group-listen E. Router(config)#ip wccp web-cache group-address 224.1.1.100 Router(config)#interface FastEthernet0/0 Router(config)#ip wccp web-cache redirect out Answer: D Download the newest PassLeader 400-251 dumps from passleader.com now! 100% Pass Guarantee! 400-251 PDF dumps & 400-251 VCE dumps: <http://www.passleader.com/400-251.html> (366 Q&As) (New Questions Are 100% Available and Wrong Answers Have Been Corrected! Free VCE simulator!) p.s. Free 400-251 dumps download from Google Drive: https://drive.google.com/open?id=0B-ob6L_QjGLpd3JLalNVS0VWbms