

[2016-NEW! Practice PassLeader New 70q 200-401 Dumps To Pass Exam Quickly (Question 1 – Question 15)

How to pass 200-401 exam? We recommend you to try PassLeader 200-401 exam dumps! PassLeader 200-401 dumps contain all real 200-401 exam questions, which will ensure you passing 200-401 exam easily! What's more, PassLeader supply both 200-401 PDF dumps and 200-401 VCE dumps, it will help you a lot during the 200-401 exam preparation! Welcome to choose the 100% valid 70q 200-401 dumps on passleader.com! keywords: 200-401 exam,70q 200-401 exam dumps,70q 200-401 exam questions,200-401 pdf dumps,200-401 practice test,200-401 vce dumps,200-401 study guide,200-401 braindumps,Managing Industrial Networks with Cisco Networking Technologies Exam P.S. Download Free 200-401 PDF Dumps From Google Drive: https://drive.google.com/open?id=0B-ob6L_QjGLpbzVsUGlPZ2hheDQ QUESTION 1 Drag and Drop Question

Drag the steps on the left and arrange them in the order they should be completed when commissioning an industrial Ethernet switch on the right.

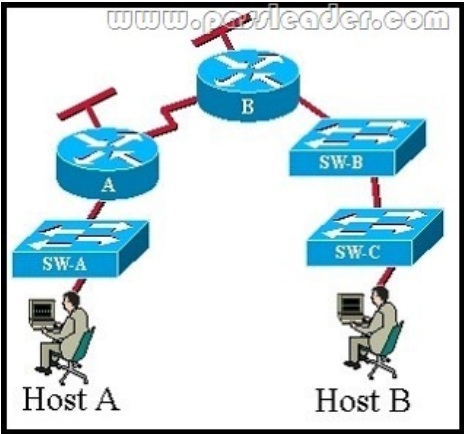
Wired the switch to the DC power supply	Mount the switch on the DIN rail
Wire the DC power supply	Wire the switch ground to common ground
Mount the switch on the DIN rail	Wire the DC power supply
Connect Patch cords	Wire the switch to the DC power supply
Wire the switch ground to common ground	Perform Switch configuration
Perform Switch configuration	

Answer:

Drag the steps on the left and arrange them in the order they should be completed when commissioning an industrial Ethernet switch on the right.

Wired the switch to the DC power supply	Mount the switch on the DIN rail
Wire the DC power supply	Wire the switch ground to common ground
Mount the switch on the DIN rail	Wire the DC power supply
Connect Patch cords	Wire the switch to the DC power supply
Wire the switch ground to common ground	Perform Switch configuration
Perform Switch configuration	

QUESTION 2 According to the Purdue Reference Model, at which layer would you perform manufacturing operations and control? A. Level 0 B. Level 1 C. Level 2 D. Level 3 E. Level 4 Answer: D QUESTION 3 Refer to the exhibit. CCNA.com has the industrial network shown in the exhibit. All switches are configured as layer 2 switches and are using VLAN 1 as their management VLAN. Each VLAN 1 interface has been assigned the correct IP address. What is the purpose of assigning a default gateway to SW-C switch?



A. allows connectivity between the VLAN 1 interface on SW-C and other devices in the network. B. allows connectivity between Host A and other devices in the network. C. allows connectivity between Host B and other devices in the network. D. allows the switch to pass traffic between Host A and Host B. Answer: A QUESTION 4 What should be done with unused conductors in copper unshielded or shielded twisted-pair network cables? A. terminate in their characteristic impedance B. trim back and properly insulate C. connect to protective earth D. splice to a used conductor Answer: A QUESTION 5 Which option best describes a mechanical, ingress, climatic, chemical and electromagnetic environment that is classified as M3 I3 C3 E3? A. the highest quality B. office environment C. severe D. serviced by multiple cable segments Answer: C

QUESTION 6 With what are APC connectors used? A. Category 6a cables that need tight radius bends
B. copper network cables in corrosive environments C. single-mode fiber-optic
cables to reduce return loss D. high-density copper patch panels Answer: C

QUESTION 7 Which characteristic causes multimode fiber-optic cable to differ from single mode? A. by allowing multiple
network services in the same cable B. shorter maximum network segment length for a given bandwidth
C. a wider variety of available connector types D. use outdoors as well as indoors
Answer: B

QUESTION 8 For which three issues should fiber-optic network segments be tested? (Choose three.)
A. attenuation B. near-end crosstalk C. length
D. polarity E. jitter F. tensile stress Answer: ACD

QUESTION 9 An Ethernet cable is attached to a PC NIC and then attached to a switch port. The PC power is turned on and the
switch port link LED turns green. The link light indicates what two conditions? (Choose two.) A. Layer 2
communication has been established between the PC and switch. B. The PC has received a DHCP address.
C. Traffic is being sent from the switch to the PC. D. If flashing, the green LED
indicates port speed of 100 Mb/s. E. The Layer 1 media is functioning between the PC and switch.
F. The switch port is functioning as a half-duplex connection. Answer: AE

QUESTION 10 At which Layer would you check ACLs for TCP ports being blocked? A. Layer 1 B. Layer 2
C. Layer 3 D. Layer 4 Answer: D

QUESTION 11 What two things does a router do when it forwards a packet? (Choose two.) A. switches the packet to the appropriate outgoing interfaces
B. computes the destination host address C. determines the next hop on the path
D. updates the destination IP address E. forwards ARP requests Answer: AC

QUESTION 12 You are called upon to troubleshoot connectivity problems to a network device on a production floor. You have
used ping and traceroute to verify that you cannot connect to the device from the management network. The network is
209.165.202.128/27 and the device has been given the IP address 209.165.202.158 and mask 255.255.255.224. You have verified
that you can reach the device with your computer connected to the same switch as the device. What could be the cause of this
problem? A. The device is set to the wrong subnet mask. B. The device is set to the
wrong IP address. C. The device has no IP default gateway. D. The device is
connected to a switchport in the wrong VLAN. Answer: C

QUESTION 13 Which of these is a routed protocol?
A. RIP B. UDP C. IP D. HTTP
E. IGRP Answer: C

QUESTION 14 With a Cisco IE 2000 switch, what does a port status LED indicate
when it is solid amber? A. The port is sending or receiving data. B. A link is present.
C. No link is present. D. There is a link fault. E. The port is
not forwarding. Answer: E

QUESTION 15 With a Cisco IE 2000 switch, what does a port status LED indicate when it is solid
green? A. The port is sending or receiving data. B. A link is present.
C. No link is present. D. There is a link fault. E. The port is
not forwarding. Answer: B

Download the newest PassLeader 200-401 dumps from [passleader.com](http://www.passleader.com) now! 100% Pass Guarantee!
200-401 PDF dumps & 200-401 VCE dumps: <http://www.passleader.com/200-401.html> (70 Q&As) (New Questions Are 100%
Available and Wrong Answers Have Been Corrected!) P.S. Free 200-401 PDF dumps download from Google Drive:
https://drive.google.com/open?id=0B-ob6L_QjGLpbzVsUGlPZ2hheDQ