

[Feb-2016 Update PassLeader New 221q 200-310 Exam Questions with Free PDF Study Guide Download (21-40)]

Where Download New Free 200-310 Exam Dumps? As we all know that new 200-310 exam is difficult to pass, if you cannot get the valid 200-310 exam questions, you will fail the 200-310 exam, but DO NOT WORRY! Nowadays, PassLeader has published the newest 221q 200-310 vce dumps and pdf dumps, in PassLeader's new 221q 200-310 braindumps, you can get all the new questions and answers, it is 100% valid and will help you achieving 200-310 exam certification quickly. keywords: 200-310 exam, 221q 200-310 exam dumps, 221q 200-310 exam questions, 200-310 pdf dumps, 200-310 vce dumps, 200-310 study guide, 200-310 practice test, CCDA -- Designing for Cisco Internetwork Solutions Exam

Why Not Try **PassLeader New Premium 200-310 Exam Dumps?**

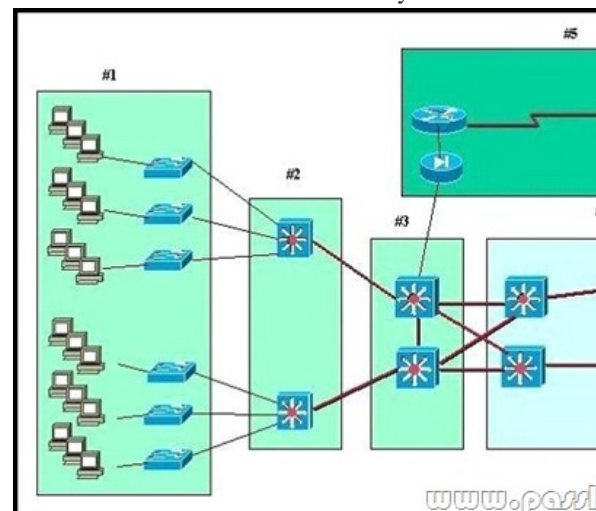
Pass4sure	PL PassLeader	TEST KING
Not Available Not In Stock	BONUS !!! Free VCE Player 221 Q&As Price: \$99.99 Coupon Code -- CELEB	Not Available Not In Stock

QUESTION 21 Which factor would be most influential in choosing multimode fiber optic connections over UTP?
A. signal attenuation B. required bandwidth C. required distance D. electromagnetic interference E. cost Answer: C QUESTION 22 A hierarchical design of the EIGRP domain facilitates which two of the following? (Choose two.)
A. route summarization B. faster convergence C. unequal cost load balancing D. redistribution E. virtual links Answer: AB QUESTION 23 Which three types of WAN topologies can be deployed in the Service Provider Module? (Choose three.)
A. ring B. star C. full mesh D. core/edge E. collapsed core F. partial mesh Answer: BCF QUESTION 24 Which of the following is a component within the Cisco Enterprise Campus module?
A. Teleworker B. E-Commerce C. Internet Connectivity D. Building Distribution E. WAN/MAN Site-to-Site VPN Answer: D QUESTION 25 Which two features are supported by single wireless controller deployments? (Choose two.)
A. automatic detection and configuration of LWAPPs B. LWAPP support across multiple floors and buildings C. automatic detection and configuration of RF parameters D. Layer 2 and Layer 3 roaming E. controller redundancy F. mobility groups Answer: AB QUESTION 26 Which three describe challenges that are faced when deploying an environment for teleworkers? (Choose three.)
A. supporting a mix of technically knowledgeable and nontechnical users B. simplifying router installation and configuration C. verifying available power at employee's house for necessary equipment D. avoiding situations where employees might use nonstandard hardware or configurations E. reducing daily commuting time to main office location F. providing access to FTP servers located in main office location G. implementing leased line connectivity between main office and employee's home location Answer: ABD QUESTION 27 Which statement describes the methodology that supports the Cisco Enterprise Architecture models?
A. It divides the network into functional network modules. B. It divides the network into role-based network modules. C. It divides the network into regional network modules. D. It divides the network into operational network modules. Answer: A QUESTION 28 OSPF will be used as the IGP within a campus network. Which two things should you consider before deployment? (Choose two.)
A. All areas need to connect back to area 0. B. The OSPF process number on each router should match. C. NSSA areas should be used when an area cannot connect directly to area 0. D. Stub areas should be connected together using virtual links. E. ECMP may cause undesired results depending on the environment. Answer: AE QUESTION 29 Which is the North American RIR for IPv4 addresses?
A. RIPE B. ARIN C. IANA D. IEEE E. APNIC Answer: B QUESTION 30 An enterprise campus module is typically made up of four submodules, as described by the Cisco Enterprise Architecture Model. Which two submodules are part of

this module? (Choose two.) A. DMZ B. enterprise branch C. building distribution D. server farm/data center E. MAN Answer: CD



<http://www.passleader.com/200-310.html> QUESTION 31 WAN backup over the Internet is often used to provide primary connection redundancy. Which is the most important consideration when passing corporate traffic over the public Internet? A. security B. static versus dynamic routing C. bandwidth D. QoS E. latency Answer: A QUESTION 32 Which type of area should you use in an enterprise OSPF deployment if you want to prevent propagation of type 5 LSAs but still allow the redistribution of external routes? A. stub B. totally stubby C. backbone D. NSSA E. virtual link Answer: D QUESTION 33 Which protocol is used for voice bearer traffic? A. MGCP B. RTP C. SCCP D. CDP E. ICMP Answer: B QUESTION 34 Which Cisco device management feature is most suited to metering network traffic and providing data for billing network usage? A. BGP B. Cisco Discovery Protocol C. QoS D. RMON E. NetFlow Answer: E QUESTION 35 What are three valid methods of gathering information about an existing data network? (Choose three.) A. Use organizational input. B. Perform a traffic analysis. C. Analyze the user-mapping of a running application. D. Perform a packet-level audit to verify carrier service guarantees. E. Perform a network audit to gather more detail about the network. F. Use reports that analyze the metrics of the customer's existing network. Answer: ABE QUESTION 36 Which two routing protocols converge most quickly? (Choose two.) A. RIPv1 B. RIPv2 C. BGP D. OSPF E. EIGRP Answer: DE QUESTION 37 What is the benefit of VLSM? A. reduces configuration complexity by using the same subnet mask length B. reduces the routing table size by using automatic route summarization C. reduces the routing table size by using manual route summarization D. allows the subnet mask and classful routing updates to be advertised E. secures the hosts on a subnet by using RFC 1918 addresses Answer: C QUESTION 38 Which two of these are scalability benefits of designing a network that utilizes VPNs? (Choose two.) A. extends the network to remote users B. allows networks to be set up and restructured quickly C. reduces dial infrastructure expenditures D. reduces the number of physical connections E. simplifies the underlying structure of a customer WAN Answer: DE QUESTION 39 Refer to the exhibit. A standard Layer 2 campus network design is pictured. Which numbered box represents the core layer?



A. #160; #160; #160; #1 B. #160; #160; #160; #2 C. #160; #160; #160; #3 D. #160; #160; #160; #4
E. #160; #160; #160; #5 Answer: C QUESTION 40 Which two design criteria require VLANs in a proposed solution?
(Choose two.) A. #160; #160; #160; video streaming on the LAN B. #160; #160; #160; security between departments
C. #160; #160; #160; the segmenting of collision domains D. #160; #160; #160; the segmenting of broadcast domains
E. #160; #160; #160; the use of multivendor equipment F. #160; #160; #160; a limited corporate budget Answer: BD



<http://www.passleader.com/200-310.html>