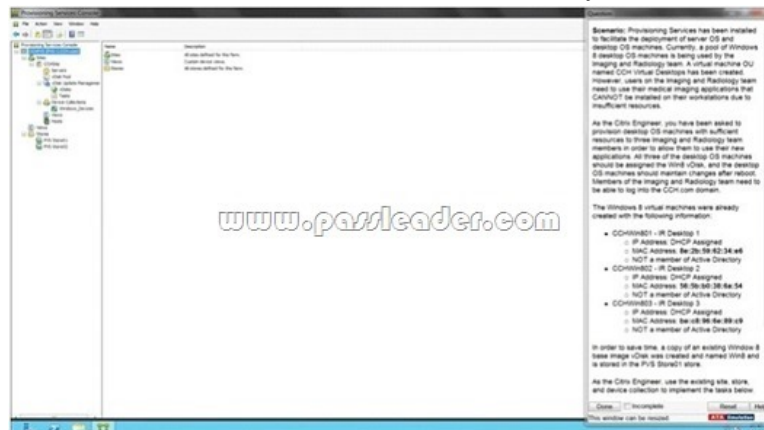


## [New Exam Dumps PassLeader Best Valid 1Y0-301 Braindump in VCE and PDF Help Passing Exam

New Updated 1Y0-301 Exam Questions from PassLeader 1Y0-301 PDF dumps! Welcome to download the newest PassLeader 1Y0-301 VCE dumps: <http://www.passleader.com/1y0-301.html> (140 Q&As) Keywords: 1Y0-301 exam dumps, 1Y0-301 exam questions, 1Y0-301 VCE dumps, 1Y0-301 PDF dumps, 1Y0-301 practice tests, 1Y0-301 study guide, 1Y0-301 braindumps, Deploying Citrix XenDesktop 7.6 Solutions Exam **NEW QUESTION 140** Scenario: Provisioning Services has been installed to facilitate the deployment of server OS and desktop OS machines. Currently, a pool of Windows 8 desktop OS machines is being used by the Imaging and Radiology team. A virtual machine OU named CCH Virtual Desktops has been created. However, users on the Imaging and Radiology team need to use their medical imaging applications that CANNOT be installed on their workstations due to insufficient resources. As the Citrix Engineer, you have been asked to provision desktop OS machines with sufficient resources to three Imaging and Radiology team members in order to allow them to use their new applications. All three of the desktop OS machines should be assigned the Win8 vDisk, and the desktop OS machines should maintain changes after reboot. Members of the Imaging and Radiology team need to be able to log into the CCH.com domain. The Windows 8 virtual machines were already created with the following information: CCHWin801 - IR Desktop 1 ?&#160;&#160;&#160; IP Address: DHCP Assigned ?&#160;&#160;&#160; MAC Address: 56:5b:b0:38:6a:54 ?&#160;&#160;&#160; NOT a member of Active Directory ?&#160;&#160;&#160; CCHWin803 - IR Desktop 3 CCHWin802 - IR Desktop 2 ?&#160;&#160;&#160; IP Address: DHCP Assigned ?&#160;&#160;&#160; MAC Address: be:c8:96:6e:89:c9 ?&#160;&#160;&#160; NOT a member of Active Directory In order to save time, a copy of an existing Windows 8 base image vDisk was created and named Win8 and is stored in the PVS StoreOI store. As the Citrix Engineer, use the existing site, store, and device collection to implement the tasks below. Tasks: 1. Create and configure all 3 of the Windows 8 desktop OS machines as target devices to boot using the Win8 vDisk. 2. Name the target devices CCHWin801, CCHWin802, and CCHWin803. 3. Modify the vDisk as necessary to meet the requirements outlined in the scenario.



Answer: XenDesktop 7 Machine Catalog 1. Create the VM in an existing catalog 2. Choose the OS type

### Operating System and Hardware

We want to help you create the correct configuration and provide a recommendation

[Learn more](#)

Select an operating system and machine catalog

- ☒ Windows Desktop OS  
The Desktop OS Machine Catalog is used for the deployment of standardized desktops.
- ☐ Windows Server OS  
The Server OS Machine Catalog is used for the deployment of standardized servers.
- ☐ Remote PC Access  
The Remote PC Access Machine Catalog is used for the deployment of physical office desktops, all of which are managed by Citrix.

3. We will be using VMs and Citrix Machine Creation Services, so the defaults are fine

## Machine Management

[www.passleader.com](#)

As part of creating a Machine Catalog, the way you plan to provision machines influences the recommended Machine Catalog type.

[Learn more](#)

This infrastructure will be built using:

- ☒ Virtual machines
- ☐ Physical hardware

Desktop images are managed using:

- ☒ Machine Creation Services (MCS)
- ☐ Provisioning Services (PVS)
- ☐ Another service or technology

I will manage my desktop images with something other than Citrix technology. I have existing Master Images already prepared.

### 4. Use the default

## Desktop Experience

[www.passleader.com](#)

Consider the tasks your users perform and then decide which desktop experience would be best.

Which desktop experience do you want users to have?

- ☒ I want users to connect to a new (random) desktop each time they log on.
- ☐ I want users to connect to the same (static) desktop each time they log on.

Do you want to save any changes that the user makes to the desktop?

- ☒ Yes, save changes on a separate Personal vDisk.
- ☐ Yes, create a dedicated virtual machine and save changes on the local disk.
- ☐ No, discard all changes and clear virtual desktops when the user logs off.  
If configured, folder redirection will not be affected.

### 5. Choose the master image WIN8.vdisk

## Master Image

Select a Host and corresponding Virtual Machine or snapshot from the list to create a Master Image.

Select a Resource:

VDI

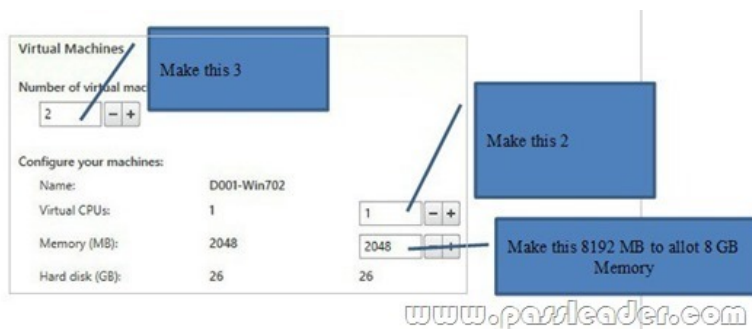
Select a snapshot (or a Virtual Machine):



☐ The Master Image is built using Windows XP or Windows Vista

You should also select this option if the snapshot or Master Image is running Windows 7 with VDA 5.6

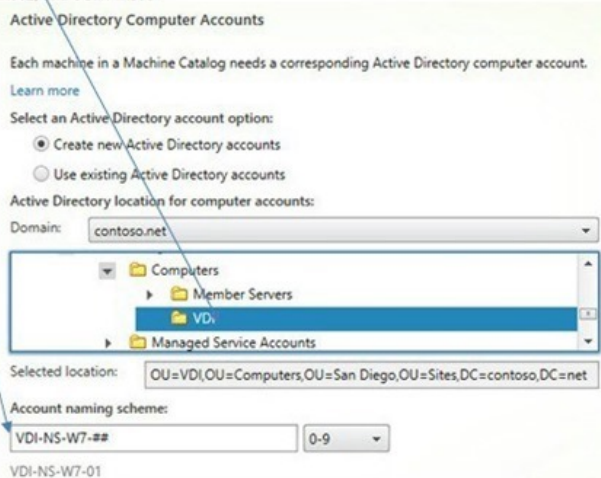
6. A great feature of XenDesktop is the ability to customize the catalog hardware at provisioning time, so you can offer different tiers of VMs from the exact same master image. No need to build up templates with the same OS and software stack, just to customize the vCPUs and memory specs



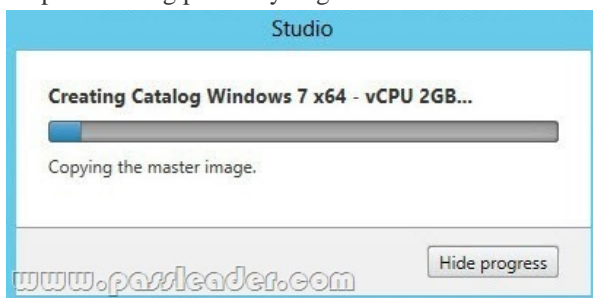
## 7. OU – CCH Virtual Desktops

Machine Names –

.CCHWin801, CCHWin802, and CCHWin803



8. After you kick off the provisioning process you get a nice status. MCS first makes a copy of your master VM, then does its magic to create copies



Download the newest PassLeader 1Y0-301 dumps from [passleader.com](http://www.passleader.com) now! 100% Pass Guarantee! 1Y0-301 PDF dumps & 1Y0-301 VCE dumps: <http://www.passleader.com/1y0-301.html> (140 Q&As)