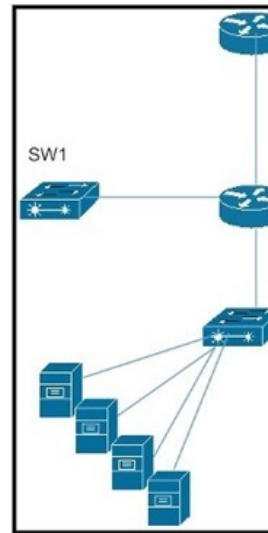


## [New Exam Dumps Testing PassLeader 640-911 Exam Questions and Answers To 100% Pass 640-911 Exam

New Updated 640-911 Exam Questions from PassLeader 640-911 pdf dumps! Welcome to download the newest PassLeader 640-911 vce dumps: <http://www.passleader.com/640-911.html> (185 Q&As) Keywords: 640-911 exam dumps, 640-911 exam questions, 640-911 vce dumps, 640-911 pdf dumps, 640-911 practice test, 640-911 study guide, Introducing Cisco Data Center Networking (DCICN) Exam NEW QUESTION 136 An engineer replaces multiple hubs in the network with Layer 2 switches. What are two effects on the performance of the network? (Choose two.) A.&#160;&#160;&#160; reduced number of frame collisions B.&#160;&#160;&#160; multiple devices can transmit and receive frames simultaneously C.&#160;&#160;&#160; reduced broadcast packet propagation D.&#160;&#160;&#160; reduced complexity in monitoring traffic within the Layer 2 domain E.&#160;&#160;&#160; reduced number of packet collisions Answer: AB NEW QUESTION 137 Refer to the exhibit. If switch SW2 was replaced with a router, which two effects would it have on the network? (Choose two.)



A.&#160;&#160;&#160; reduce the number of collision domains B.&#160;&#160;&#160; increase the number of broadcast domains C.&#160;&#160;&#160; increase the number of collision domains D.&#160;&#160;&#160; reduce the number of broadcast domains E.&#160;&#160;&#160; no change in collision domains Answer: BE NEW QUESTION 138 A network engineer has multiple network devices to choose from to connect 10 PCs to a network. Requirements include that packet collisions are minimized for each client and that the physical network topology must be highly scalable. Which two connectivity options should the engineer use? (Choose two.) A.&#160;&#160;&#160; Connect each of the 10 client PCs to a network switch. B.&#160;&#160;&#160; Use a star physical network topology. C.&#160;&#160;&#160; Connect each of the 10 client PCs to a network router. D.&#160;&#160;&#160; Connect each of the 10 client PCs to a network hub. E.&#160;&#160;&#160; Use a ring physical network topology. F.&#160;&#160;&#160; Use a mesh physical network topology. Answer: AB NEW QUESTION 139 Which protocol operates at Layer 3 of OSI model and is used for host addressing? A.&#160;&#160;&#160; TCP B.&#160;&#160;&#160; UDP C.&#160;&#160;&#160; IP D.&#160;&#160;&#160; RIP E.&#160;&#160;&#160; OSPF Answer: C NEW QUESTION 140 After a firewall is installed in the network, users have lost FTP access to the remote Cisco Nexus switches, but the TFTP access still works. Which protocol is blocked by the firewall? A.&#160;&#160;&#160; UDP B.&#160;&#160;&#160; TCP C.&#160;&#160;&#160; IP D.&#160;&#160;&#160; ICMP E.&#160;&#160;&#160; RIP Answer: B NEW QUESTION 141 A network operations team needs to monitor the health of Cisco Nexus switches. Which type of UDP-based protocol should be configured on these devices for management and monitoring? A.&#160;&#160;&#160; SSH B.&#160;&#160;&#160; TELNET C.&#160;&#160;&#160; FTP D.&#160;&#160;&#160; SNMP E.&#160;&#160;&#160; SMTP Answer: D NEW QUESTION 142 Which protocol is supported when OSPFv2 is used as the routing protocol? A.&#160;&#160;&#160; IPv6 B.&#160;&#160;&#160; IPv4 C.&#160;&#160;&#160; UDP D.&#160;&#160;&#160; TCP Answer: B NEW QUESTION 143 What is the maximum distance for 100Base-TX? A.&#160;&#160;&#160; 10m B.&#160;&#160;&#160; 100m C.&#160;&#160;&#160; 400m D.&#160;&#160;&#160; 500m Answer: B NEW QUESTION 144 What is the result when two data transmissions are sent at the same time? A.&#160;&#160;&#160; A collision occurs and both devices stop transmission and back off. B.&#160;&#160;&#160; A collision occurs and one device retransmits.

C. All traffic continues to transmit. D. A collision occurs and both devices resend transmissions. Answer: A NEW QUESTION 145 There is a large amount of traffic inside a network segment with a destination address of FF:FF:FF:FF:FF:FF. What type of traffic uses this address? A. FF:FF:FF:FF:FF:FF is the Layer 2 broadcast address. B. FF:FF:FF:FF:FF:FF is the Layer 2 network address. C. FF:FF:FF:FF:FF:FF is the Layer 3 broadcast address. D. FF:FF:FF:FF:FF:FF is the Layer 3 network address. E. FF:FF:FF:FF:FF:FF is multicast traffic. Answer: A NEW QUESTION 146 What two commands are used to modify the MAC Table? (Choose two.) A. no mac-address-table static B. show address-table C. mac-address-table aging D. show mac-address-table E. address-table static Answer: AC Download the newest PassLeader 640-911 dumps from passleader.com now! 100% Pass Guarantee! 640-911 pdf dumps & 640-911 vce dumps: <http://www.passleader.com/640-911.html> (185 Q&As)