

[Pass Ensure VCE Dumps Free Passleader 299q 70-689 VCE Brindump with Free PDF Study Guide (151-170)]

Get New Valid Dumps To Pass Exam 70-689: The following new 70-689 exam questions were updated in recent days by PassLeader, visit passleader.com to get the full version of new 299q 70-689 exam dumps with free version of new VCE Player software, our valid 70-689 briandump will help you passing 70-689 exam easily! PDF practice test and VCE are all available now! keywords: 70-689 exam,70-689 exam dumps,299q 70-689 exam questions,70-689 pdf dumps,70-689 vce dumps,299q 70-689 brindump,70-689 practice test,Upgrading Your Skills to MCSA Windows 8 exam

Why Not Try **PassLeader New Premium 70-689 Ex**

Pass4sure **PL PassLeader** Leader of IT Certifications

Banned By Microsoft Not Available

BONUS !!! Free VCE Player

299 Q&As Price: \$99.99

Coupon Code -- CELEB

QUESTION 151 You administer client computers that run Windows 8 Enterprise deployed by using Windows Deployment Services (WDS). Your company recently purchased 25 new tablets that run Windows 8 Pro. For all 25 new tablets, you want to replace the existing Windows 8 Pro installation with Windows 8 Enterprise. You need to deploy the Windows 8 Enterprise image to all 25 tablets simultaneously by using the existing WDS infrastructure. What should you do? A. Start the tablets from the Windows To Go workspace. B. Start the tablets from a USB flash drive with a customized Windows Preinstallation Environment (WinPE). C. Start the tablets normally. Map the Windows Image (WIM) file from a WDS network share. D. Start the tablets from a customized Windows Recovery Environment (WinRE). Answer: A QUESTION 152 Drag and Drop Questions Your company recently purchased 25 new laptops. All 25 laptops have the same hardware configuration and do not have any operating system installed. You have been asked to deploy Windows 8 on these laptops. You have installed and configured Windows 8 on a reference laptop. You need to create an image and deploy it to the 25 new laptops. Which four actions should you perform in sequence? (To answer, move the appropriate actions from the list of actions to the answer area and arrange them in the correct order.)

Answer Area

Start the destination laptop from the Windows PE media. Use the Diskpart tool to create the desired partition structure.

Start the destination laptop from the Windows PE media, and then use the Fdisk tool to create the desired partition structure.

Remove computer-specific information from the reference laptop.

Start the reference laptop from the Windows PE media. Use the DISM tool to capture the image, and then upload the image file to a network share.

Use Windows Easy Transfer (WET) to transfer the image from network share, and then use the DISM tool to apply the image to your windows partition.

Connect to the network share, and then use the DISM tool to apply the image to your windows partition.

Answer:

	Answer Area
Start the destination laptop from the Windows PE media. Use the Diskpart tool to create the desired partition structure.	Remove computer-specific information from the reference laptop.
Start the destination laptop from the Windows PE media, and then use the Fdisk tool to create the desired partition structure.	Start the reference laptop from the Windows PE media. Use the DISM tool to capture the image, and then upload the image file to a network share.
Remove computer-specific information from the reference laptop.	Start the destination laptop from the Windows PE media, and then use the Fdisk tool to create the desired partition structure.
Start the reference laptop from the Windows PE media. Use the DISM tool to capture the image, and then upload the image file to a network share.	Connect to the network share, and then use the DISM tool to apply the image to your windows partition.
Use Windows Easy Transfer (WET) to transfer the image from network share, and then use the DISM tool to apply the image to your windows partition.	
Connect to the network share, and then use the DISM tool to apply the image to your windows partition.	

QUESTION 153 Drag and Drop Questions You administer computers that run windows 7 and Windows 8. You run an application that saves files that contain local settings unique to each user. You want to allow users to synchronize settings for an application to any enterprise computer when they log on to the enterprise computer. You need to implement a solution that will move a user's settings files to any computer. You also need to ensure that you can roll back the changes if necessary. Which required task or tasks should you perform with each approach? (To answer, drag the appropriate required task to the corresponding approach. Each required task may be used once, more than once, or not at all. You may need to drag the split bar between panes or scroll to view content.)

Required Task	Approach
Create a settings location template.	Generator
Place the settings location template.	Template Catalog Path
Enable Folder Redirection.	Microsoft Desktop Optimization Pack (MDOP)
Deploy the User Experience Virtualization (UE-V) Agent.	

Answer:

Generator	Create a settings location template.
Template Catalog Path	Place the settings location template.
Microsoft Desktop Optimization Pack (MDOP)	Deploy the User Experience Virtualization (UE-V) Agent.

QUESTION 154 Drag and Drop Questions You support a computer that runs Windows 8 Enterprise. You want to create a

dual-boot configuration by using the native boot virtual hard disk (VHD) method. You need to create an alternate Windows 8 installation. Which three actions should you perform in sequence? (To answer, move the appropriate actions from the list of actions to the answer area and arrange them in the correct order.)

	Answer Area
Update the system partition by using the Bootrec tool, and then modify the boot menu by using the BCDedit tool.	
Update the system partition by using the BCDedit tool, and then modify the boot menu by using the Bootrec tool.	
Install Windows 8 into a virtual hard disk (VHD) file.	
Edit the boot configuration by using the BCDedit tool on the virtual hard disk (VHD).	
Use the Computer Management console to create a virtual hard disk (VHD) file, and then create an active primary partition.	
Use Windows System Image Manager to create a virtual hard disk (VHD) file, and then create an active primary partition.	
Edit the boot configuration by using the BCDedit tool on the original Windows 8 installation.	

Answer:

	Answer Area
Update the system partition by using the Bootrec tool, and then modify the boot menu by using the BCDedit tool.	Use Windows System Image Manager to create a virtual hard disk (VHD) file, and then create an active primary partition.
Update the system partition by using the BCDedit tool, and then modify the boot menu by using the Bootrec tool.	
Install Windows 8 into a virtual hard disk (VHD) file.	Install Windows 8 into a virtual hard disk (VHD) file.
Edit the boot configuration by using the BCDedit tool on the virtual hard disk (VHD).	
Use the Computer Management console to create a virtual hard disk (VHD) file, and then create an active primary partition.	Edit the boot configuration by using the BCDedit tool on the original Windows 8 installation.
Use Windows System Image Manager to create a virtual hard disk (VHD) file, and then create an active primary partition.	
Edit the boot configuration by using the BCDedit tool on the original Windows 8 installation.	

QUESTION 155 Drag and Drop Questions You support computers that run Windows 8 Enterprise. Company policy requires that Microsoft Internet Explorer be the only browser allowed and supported. You collect software metering data and discover that several users are running other third-party browsers. You need to block other web browsers from running on the computers. All other applications should be allowed. Which three actions should you perform in sequence? (To answer, move the appropriate actions from the list of actions to the answer area and arrange them in the correct order.)

	Answer Area
Open User Configuration of Local Computer Policy.	
Open Computer Configuration of Local Computer Policy.	
Enforce Script rules.	
Create new AppLocker Deny Script rules.	
Create new AppLocker Deny Executable rules.	
Enforce Executable rules.	
Select Software Restriction Policies and set the default to Disallowed.	

Answer:

	Answer Area
Open User Configuration of Local Computer Policy.	Open Computer Configuration of Local Computer Policy.
Open Computer Configuration of Local Computer Policy.	
Enforce Script rules.	Enforce Executable rules.
Create new AppLocker Deny Script rules.	
Create new AppLocker Deny Executable rules.	Create new AppLocker Deny Executable rules.
Enforce Executable rules.	
Select Software Restriction Policies and set the default to Disallowed.	

QUESTION 156 Drag and Drop Questions You support computers that run windows 8 Enterprise. AppLocker policies are deployed. Company policy states that AppLocker must be disabled. You need to disable AppLocker. Which three actions should you

perform in sequence? (To answer, move the appropriate actions from the list of actions to the answer area and arrange them in the correct order.)

Action	Answer Area
Delete all AppLocker rules.	
Disable the Application Identity service.	
Run the <code>gpupdate /force</code> command.	
Delete all Software Restriction Policy rules.	
Insert the Windows 8 Pro installation DVD into the optical drive of your computer. Run the <code>setup.exe</code> command with the <code>/checkupgradeonly</code> option.	
Install Windows Assessment and Deployment Kit (ADK).	

Answer:

Action	Answer Area
Delete all Software Restriction Policy rules.	Delete all AppLocker rules.
Insert the Windows 8 Pro installation DVD into the optical drive of your computer. Run the <code>setup.exe</code> command with the <code>/checkupgradeonly</code> option.	Disable the Application Identity service.
Install Windows Assessment and Deployment Kit (ADK).	Run the <code>gpupdate /force</code> command.

QUESTION 157 Drag and Drop Questions You administer laptops and virtual desktop computers that run Windows 8 and are joined to an Active Directory domain. Your company provides virtual desktop computers to all users. Employees in the sales department also use laptops, sometimes connected to the company network and sometimes disconnected from the company network. You want sales department employees to have the same personal data, whether they are using their virtual desktop computers or their laptops. You need to configure the network environment to meet the requirements. Which three actions should you perform in sequence? (To answer, move the appropriate actions from the list of actions to the answer area and arrange them in the correct order.)

Actions	Answer Area
Configure folder redirection for the employees' domain accounts to the network share.	
Configure slow link detection for the laptops.	
Create a network share.	
Disable offline files on the network share.	
Create a super-mandatory profile for all sales department employees on the network share.	
Set the primary computer for all employees from the sales department.	
Configure offline files for the laptops.	

Answer:

Actions	Answer Area
Configure folder redirection for the employees' domain accounts to the network share.	Create a network share.
Configure slow link detection for the laptops.	Configure folder redirection for the employees' domain accounts to the network share.
Create a network share.	Configure offline files for the laptops.
Disable offline files on the network share.	
Create a super-mandatory profile for all sales department employees on the network share.	
Set the primary computer for all employees from the sales department.	
Configure offline files for the laptops.	

QUESTION 158 You manage a network that includes computers that run Windows 8 Enterprise. All of the computers on the network are members of an Active Directory domain. The company recently proposed a new security policy that prevents users from synchronizing applications settings, browsing history, favorites, and passwords from the computers with their Microsoft accounts. You need to enforce these security policy requirements on the computers. What should you do? A. From each computer, navigate to Change Sync Settings and set the Sync Your Settings options for Apps, Browser, and Passwords to Off. B. On the Group Policy Object, configure the Accounts: Block Microsoft accounts Group Policy setting to Users can't add or log on with Microsoft accounts. C. On the Group Policy Object, configure the Accounts:

Block Microsoft accounts Group Policy setting to Users can't add Microsoft accounts. D. From each computer, navigate to Change Sync Settings and set the Sync Your Settings option to Off. Answer: B QUESTION 159 You administer a computer that runs Windows 8 Pro. You need to create a backup copy of the computer system drive. The backup copy must support a complete system drive restore to another computer. What should you do? A. Create a system restore point. B. Run the bcdedit /export command. C. Perform a backup to a shared folder by using the wadmin command with the -allcritical switch. D. Create a system recovery drive. Answer: C QUESTION 160 You manage client computers that run Windows 8 and are part of a workgroup. These computers are configured to use Microsoft Update. Updates are downloaded every day at 10:00 and installed automatically. Users report that their computers sometimes reboot without any interaction. You need to prevent unplanned automatic reboots of the computers. What should you do? A. Enable the Reschedule Automatic Updates scheduled installations policy setting. B. Disable the Re-prompt for restart with scheduled installations policy setting. C. Enable the Automatic Updates detection frequency policy setting. D. Enable the No auto-restart with logged on users for scheduled automatic updates installations policy setting. Answer: A

Why Not Try PassLeader New Premium 70-689 E

Pass4sure PL PassLeader® Leader of IT Certifications

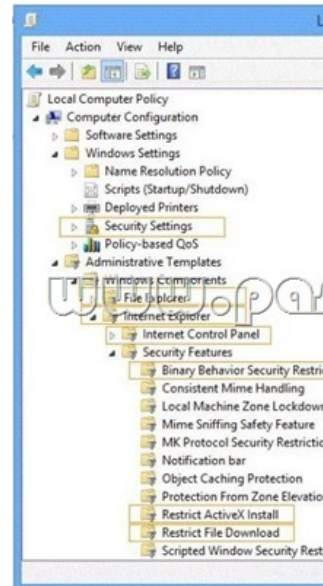
Banned By Microsoft Not Available

BONUS !!! Free VCE Player

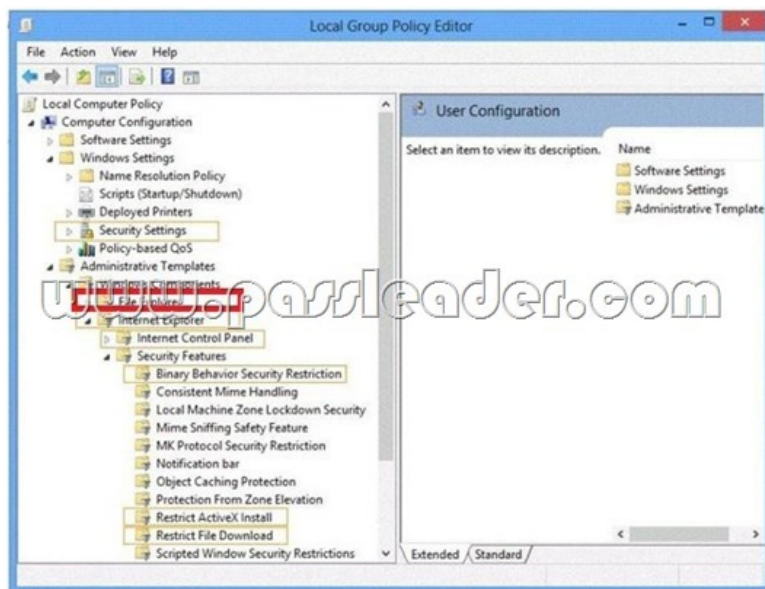
299 Q&As Price: \$99.99

Coupon Code -- CELEB

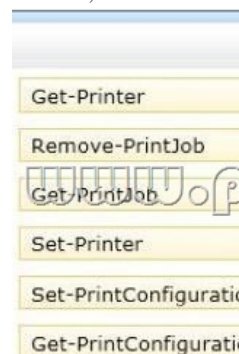
<http://www.passleader.com/70-689.html> QUESTION 161 Hotspot Questions You support desktop computers that run Windows 8 Enterprise. One computer is a member of a workgroup and is used as a guest computer in a reception area. You need to configure the SmartScreen setting to require administrator approval before running downloaded unknown software on the desktop computer. Which policy setting should you use? (To answer, select the appropriate object in the answer area.)



Answer:



QUESTION 162 You administer computers that run Windows 8 Pro. Your company uses credit card readers that require a custom driver supplied by the manufacturer. The readers frequently are moved from computer to computer. Your company recently purchased five new computers that run Windows 8 Pro. You want the required drivers to be installed automatically and silently when users connect the readers to the new computers. You need to pre-stage the credit card reader driver on the new computers. What should you do? A. Add a Registry key with a path to a network shared folder that has the driver installation files. B. Run the pnputil.exe utility. Specify the document scanner driver. C. Add a Registry key with a path to a local folder on every computer. Copy the driver installation files to the folder. D. Run the dism.exe utility. Copy the driver files to the C:WindowsSystem32drivers folder in the WIM image. Answer: B QUESTION 163 You support computers that run Windows 8 Enterprise. Your company protects all laptops by using the BitLocker Network Unlock feature. Some employees work from home. You need to ensure that employees can log on to their laptops when they work from home. What should you do? A. Provide employees their BitLocker PINs. B. Ensure that the Trusted Platform Module (TPM) chips in the laptops are version 1.2 or greater. C. Enable BitLocker To Go. D. Have users run the Manage-bde.exe -unlock command before they disconnect from the company network. Answer: A QUESTION 164 Drag and Drop Questions You administer computers and printers on your company network. The computers run Windows 8 Pro. You need to remove a print job from a print queue by using a remote PowerShell session. Which three commands should you run in sequence? (To answer, move the appropriate commands from the list of commands in the answer area and arrange them in the correct order.)



Answer:

Get-Printer

Remove-PrintJob

Get-PrintJob

Set-Printer

Set-PrintConfiguration

Get-PrintConfiguration

Answer Area

Get-Printer

Get-PrintJob

Remove-PrintJob

QUESTION 165 You administer Windows 8 Pro and Windows RT tablets for your company. Your company network includes a Windows Server 2012 domain and Microsoft Exchange 2010 with ActiveSync and Outlook Web Access. Users will be using the tablets outside of the corporate network. The Microsoft Exchange ActiveSync policy is configured to require an alphanumeric password. You need to ensure an alphanumeric password is required on all Windows 8 tablets. What should you do?

A. From the Mail app, add the user's Exchange account. B. Set up New Partnership in Sync Center. C. From Sync your Settings, set Password to Off. D. Create a user profile by using a Microsoft account. Answer: A

QUESTION 166 You support computers that run Windows 8 and are members of an Active Directory domain. Recently, several domain user accounts have been configured with super-mandatory user profiles. A user reports that she has lost all of her personal data after a computer restart. You need to configure the user's computer to prevent possible user data loss in the future. What should you do?

A. Configure the user's documents library to include folders from network shares. B. Remove the .man extension from the user profile name. C. Add the .dat extension to the user profile name. D. Configure Folder Redirection by using the domain group policy. Answer: D

QUESTION 167 Drag and Drop Questions You administer computers that run Windows 8. The computers on your network are produced by various manufacturers and often require custom drivers. You need to design a recovery solution that allows the repair of any of the computers by using a Windows Recovery Environment (WinRE). In which order should you perform the actions? (To answer, move all actions from the list of actions to the answer area and arrange them in the correct order.)

Create a bootable WinRE Recovery media.

Extract WinRE files from the Windows Assessment and Deployment Kit (ADK).

Unmount the image file.

Add additional drivers.

Mount the WinRE image file.

Commit the changes.

Answer Area

Answer:

Create a bootable WinRE Recovery media.

Extract WinRE files from the Windows Assessment and Deployment Kit (ADK).

Unmount the image file.

Add additional drivers.

Mount the WinRE image file.

Commit the changes.

Answer Area

Extract WinRE files from the Windows Assessment and Deployment Kit (ADK).

Mount the WinRE image file.

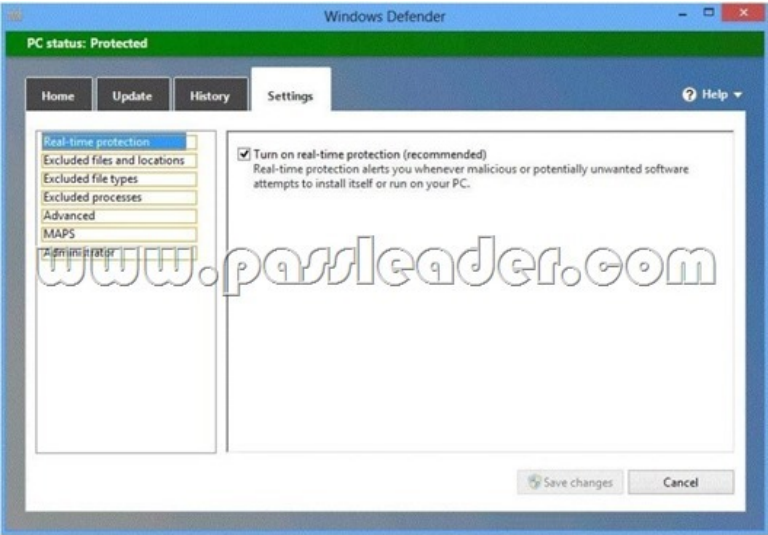
Add additional drivers.

Unmount the image file.

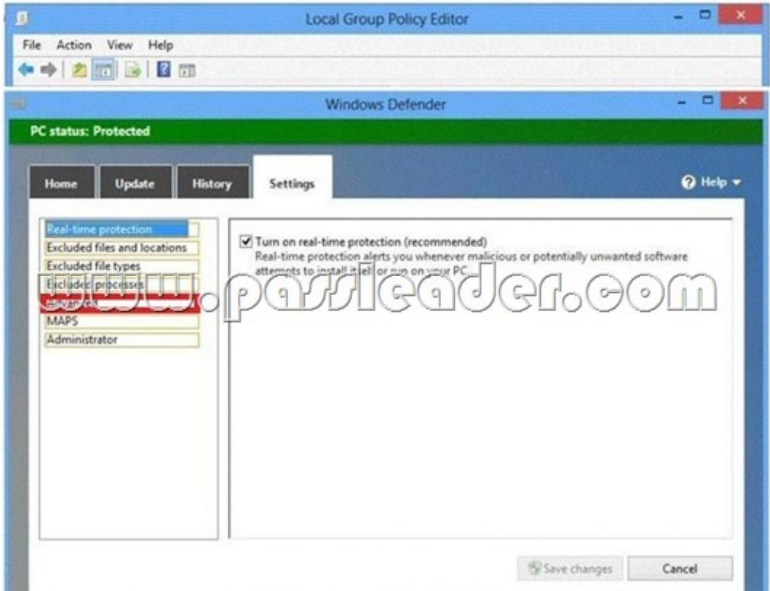
Commit the changes.

Create a bootable WinRE Recovery media.

QUESTION 168 Hotspot Questions You have a computer that runs Windows 8 Enterprise. You need to ensure that all users can see the history of detected items in Windows Defender. Which option on the Settings tab should you select? (To answer, select the appropriate option in the answer area.)



Answer:



QUESTION 169 Drag and Drop Questions You administer computers and printers on your company network. The computers run Window 8 Pro. An employee wants to add a separator page to her printer task on a network printer. You create a separator page file and save it to the C:WindowsSystem32 folder on her computer. You need to configure the computer to use the separator page for the print task. Which three actions should you perform in sequence on the computer? (To answer, move the appropriate actions from the list of actions to the answer area and arrange them in the correct order.)

In the Advanced tab, select **Separator Page**, then **Browse** to select the local copy of the separator page file. Select **Open**, and then select **OK**.

Right-click on the network printer and select **Printer properties**.

Open Control Panel and navigate to **Devices and Printers**.

Select the network printer and select **Print server properties**.

Expand **Print queues**, right-click the network printer, and then select **Properties**.

Open Control Panel and navigate to **Device Manager**.

Answer Area

Answer:

In the Advanced tab, select **Separator Page**, then **Browse** to select the local copy of the separator page file. Select **Open**, and then select **OK**.

Right-click on the network printer and select **Printer properties**.

Open Control Panel and navigate to **Devices and Printers**.

Select the network printer and select **Print server properties**.

Expand **Print queues**, right-click the network printer, and then select **Properties**.

Open Control Panel and navigate to **Device Manager**.

Answer Area

Open Control Panel and navigate to **Device Manager**.

Right-click on the network printer and select **Printer properties**.

In the Advanced tab, select **Separator Page**, then **Browse** to select the local copy of the separator page file. Select **Open**, and then select **OK**.

QUESTION 170 You are an IT consultant for small and mid-sized businesses. One of your clients wants to start using Virtual Smart Cards on its laptops and tablets, which run Windows 8 Pro. Before implementing any changes, the client wants to ensure that the laptops and tablets support Virtual Smart Cards. You need to verify that the client laptops and tablets support Virtual Smart Cards. What should you do? A. Ensure that each laptop and tablet can read a physical smart card. B. Ensure that BitLocker Drive Encryption is enabled on a system drive of the laptops and tablets. C. Ensure that each laptop and tablet has a Trusted Platform Module (TPM) chip of version 1.2 or greater. D. Ensure that the laptops and tablets are running Windows 8 Enterprise edition. Answer: C



<http://www.passleader.com/70-689.html>