

[100% Pass Reliable Microsoft 70-462 197q Exam Dumps From PassLeader For Free Share (131-150)]

How To 100% Pass New 70-462 Exam: PassLeader have been launched the newest 70-462 197q braindump with all the new updated exam questions. We provide the latest full version of 70-462 PDF and VCE dumps with new real questions and answers to ensure your 70-462 exam 100% pass, and you will get the free new version VCE Player along with your 70-462 197q VCE dumps. Welcome to visit our website -- [passleader.com](#) -- and get the premium 70-462 197q exam dumps. keywords: 70-462,70-462 exam,70-462 197q exam dumps,70-462 exam questions,70-462 pdf dumps,70-462 vce dumps,70-462 197q braindump,Administering Microsoft SQL Server 2012 Databases Exam

Compare And Choose The Best **PassLeader 70-462 Brain Dumps**

Pass4sure	PL PassLeader	TEST KI
Banned By Microsoft Not Available	Leader of IT Certifications 197 Q&As Price: \$99.99 Coupon Code -- CELEB	50 Q&As Price: \$124.99

QUESTION 131 You administer a Microsoft SQL Server 2012 database instance. You create a new user named UserA. You need to ensure that UserA is able to create SQL Server Agent jobs and to execute SQL Server Agent jobs owned by UserA. To which role should you add UserA? A. DatabaseMailUserRole B. ServerGroupAdministratorGroup C. SQLAgentUserRole D. Securityadmin
Answer: C QUESTION 132 You administer a Microsoft SQL Server 2012 database. You have a SQL Server Agent job instance that runs using the service account. You have a job step within the job that requires elevated privileges. You need to ensure that the job step can run using a different user account. What should you use? A. a schedule B. an alert C. an operator D. a proxy
Answer: D QUESTION 133 You install a Microsoft SQL Server 2012 instance. The instance will store data extracted from two databases running on Windows Azure SQL Database. You hire a data steward to perform interactive data cleansing and ad hoc querying and updating of the database. You need to ensure that the data steward is given the correct client tools to perform these tasks. Which set of tools should you install? A. SQL Server Management Studio and Distributed Replay Client B. Master Data Services and Data Quality Client C. Data Quality Client and Distributed Replay Client D. Data Quality Client and SQL Server Management Studio
Answer: A QUESTION 134 You administer a Microsoft SQL Server environment. You purchase a new server and plan to migrate your database from SQL Server 2008 to SQL Server 2012. You want to evaluate to prepare for possible conflicts and issues that may arise during or after the migration. Which SQL Server tool should you use? A. Distributed Replay B. Migration Assistant C. Data Tools D. Upgrade Advisor
Answer: D QUESTION 135 Drag and Drop Questions You are migrating an OLTP database from Windows Azure SQL Database to on-premise. You are planning the installation of a Microsoft SQL Server 2012 server failover cluster. The server has the following partitions:

Disk Subsystem	Storage Location	RAID Level	Capacity
C:	Local	1	100GB
D:	Local SSD	1	128GB
Partition(1)	SAN	10	500GB
Partition(2)	SAN	5	500GB

You install the operating system on the C: drive. The database solution will use row versioning, triggers, and cursors. The tempdb database cannot be placed on the same disk subsystem as the OLTP database. The OLTP database needs to be on the fastest disk subsystem possible. The database is currently 200GB in size. It will not substantially increase in size in the next 3 years. You need to plan the usage of the disk subsystems. To which hard disk should each database belong? (To answer, drag the appropriate database or databases to their corresponding hard disk or disks in the answer area. Answer choices may be used once, more than once, or not at all. Answer targets may be used once or not at all. Additionally, you may need to drag the split bar between panes or scroll to view content.)

Database	Hard Disk
C: drive	SQL Server binaries
D: drive	SQL P database
Partition(1)	tempdb database
Partition(2)	database backups

Answer:

Database	Hard Disk
C: drive	SQL Server binaries
D: drive	SQL P database
Partition(1)	tempdb database
Partition(2)	database backups

QUESTION 136 Drag and Drop Questions You administer several Microsoft SQL Server 2012 servers. You want to run scheduled checks to confirm that the databases on the servers are not configured to AutoShrink. You need to create a policy to check the condition. What should you do? (To answer, move the appropriate actions from the list of actions to the answer area and arrange them in the correct order.)

Create a new condition to check that the Database facet SHRINKDB field is set to TRUE .
Create a new condition to check that the Database facet @Autoshrink field is set to FALSE .
Create a new policy to check the condition. Set the evaluation mode to On Demand .
Create a new policy to check the condition. Set the evaluation mode to Schedule .
Create a schedule and enable the policy.
Export the schedule, the policy, and the condition to SQL files using the management studio SCRIPT AS... CREATE TO option.
Right-click on the policy in Management Studio and select Evaluate .

Answer:

Create a new condition to check that the Database facet SHRINKDB field is set to TRUE .	Create a new condition to check that the Database facet @Autoshrink field is set to FALSE .
Create a new condition to check that the Database facet @Autoshrink field is set to FALSE .	Create a new policy to check the condition. Set the evaluation mode to On Demand .
Create a new policy to check the condition. Set the evaluation mode to On Demand .	Create a schedule and enable the policy.
Create a new policy to check the condition. Set the evaluation mode to Schedule .	
Create a schedule and enable the policy.	
Export the schedule, the policy, and the condition to SQL files using the management studio SCRIPT AS... CREATE TO option.	
Right-click on the policy in Management Studio and select Evaluate .	

QUESTION 137 Drag and Drop Questions You administer a Windows Azure SQL Database database used for data warehouse operations. The database contains a table named OrdersHistory, defined as follows:

```
CREATE TABLE OrdersHistory
(OrderID bigint NOT NULL,
 CustomerID int NOT NULL,
 ShippingAddressID int NOT NULL,
 OrderDetails varchar(4000) NULL,
 ShipDate date NULL)
CREATE NONCLUSTERED INDEX IX_OrdersHistory_OrderID
ON OrdersHistory (OrderID) INCLUDE (CustomerID, OrderDetails)
CREATE NONCLUSTERED INDEX IX_OrdersHistory_CustomerID_OrderID
ON OrdersHistory (CustomerID, OrderID) INCLUDE (OrderDetails)
CREATE NONCLUSTERED INDEX IX_OrdersHistory_Shipdate
ON OrdersHistory (ShipDate) INCLUDE (CustomerID, OrderID)
```

A weekly ETL (extract-transform-load) runs a large INSERT statement to add data into the OrdersHistory table. The process is taking a long time to complete. You discover that the bulk of the process is performing non-clustered index updates on the OrdersHistory table. You need to improve the performance of the ETL process faster. You need to meet the following requirements:

- Avoid losing existing permissions on existing objects. - Use minimal administrative effort. What should you do? (To answer, move the appropriate actions from the list of actions to the answer area and arrange them in the correct order.)

Change the INSERT statement to a SELECT INTO statement. Run the SELECT INTO statement.

Run a CREATE INDEX statement for each index.

Run a DROP INDEX statement for each index.

Run the INSERT statement.

Run the following statement: DROP TABLE OrdersHistory.

Run the following statement: ALTER INDEX OrdersHistory DISABLE.

Run the following statement: ALTER INDEX OrdersHistory REBUILD.

Answer:

Change the INSERT statement to a SELECT INTO statement. Run the SELECT INTO statement.

Run a CREATE INDEX statement for each index.

Run a DROP INDEX statement for each index.

Run the following statement: DROP TABLE OrdersHistory.

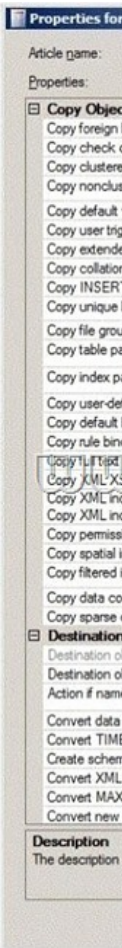
Run the following statement: ALTER INDEX ALL on OrdersHistory DISABLE.

Run the INSERT statement.

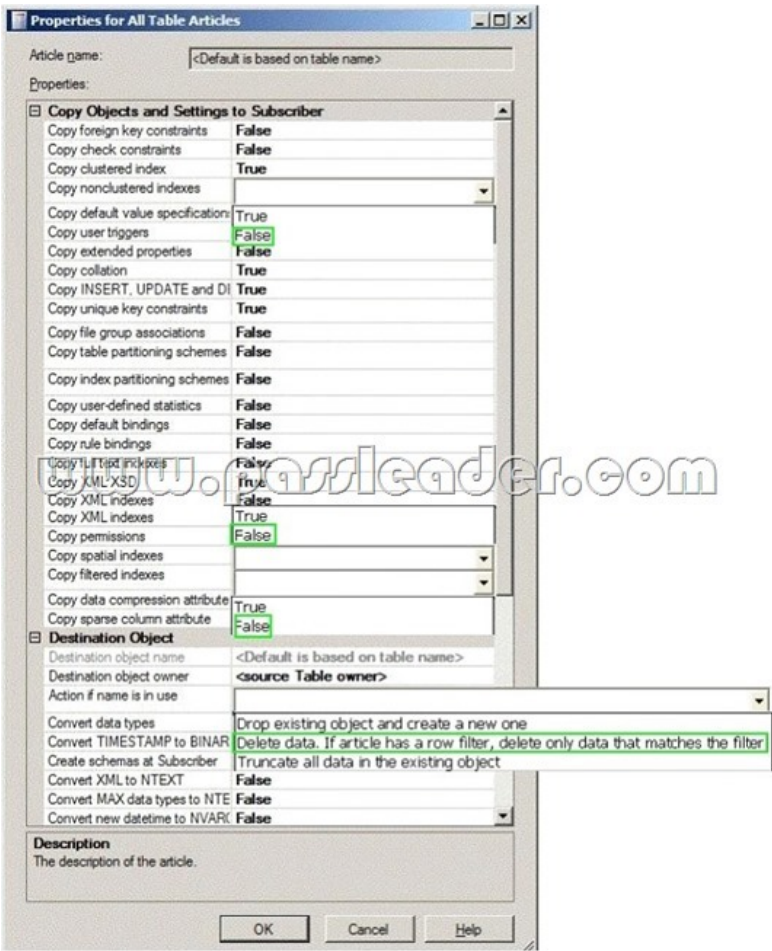
Run the following statement: ALTER INDEX ALL on OrdersHistory REBUILD.

QUESTION 138 You administer a Microsoft SQL Server 2012 Enterprise Edition server that uses 64 cores. You discover performance issues when complex calculations are performed on large amounts of data under heavy system load. You need to limit the number of cores that handle the processing. What should you configure? A. Max worker threads B. Processor affinity C. I/O affinity D. Lightweight pooling Answer: B QUESTION 139 Hotspot Question You administer two Microsoft SQL Server 2012 databases named Contoso and ContosoWarehouse. You plan to replicate tables from the Contoso database to the ContosoWarehouse database. Indexes will be added to the tables in ContosoWarehouse to improve the performance of reports. You need to ensure that the following requirements

are met: - Indexes are not modified when the subscriptions are reinitialized. - Only the clustered index from Contoso will be replicated. - Minimal transaction log activity during the reinitialization. What should you do? Choose the correct option(s).



Answer:



QUESTION 140 What is the minimum recommended amount of RAM for SQL Server 2012 Enterprise?
A. 512 MB B. 1 GB C. 2 GB D. 4 GB E. 8 GB Answer: B

Compare And Choose The Best **PassLeader 70-462 Brain Dumps**

Pass4sure	PL PassLeader	TEST KING
		
Banned By Microsoft Not Available	Leader of IT Certifications 197 Q&As Price: \$99.99 Coupon Code -- CELEB	50 Q&As Price: \$124.99

<http://www.passleader.com/70-462.html> QUESTION 141 Which of the following editions of SQL Server 2012 can you run on a computer that is running the Windows 7 Professional (x64) operating system? (Choose all that apply.) A. SQL Server 2012 (x64) Developer edition B. SQL Server 2012 (x64) Web edition C. SQL Server 2012 (x64) Enterprise edition D. SQL Server 2012 (x64) Standard edition Answer: AD QUESTION 142 Which of the following features can you install if you are installing SQL Server 2012 Enterprise edition on a computer running Windows Server 2008 R2 SP1 Enterprise edition in the Server Core configuration? (Choose all that apply.) A. Database Engine Services B. SQL Server Replication C. Analysis Services D. Reporting Services Answer: ABC QUESTION 143 On which of the following operating systems can you deploy the 64-bit version of SQL Server 2012 Enterprise edition? (Choose all that apply.) A. Windows 7 Ultimate (x64) edition B. Windows Server 2008 R2 SP1 (x64) Standard edition C. Windows Server 2008 SP2 (x64) Enterprise edition D. Windows Server 2003 R2 (x64) Enterprise edition Answer: BC QUESTION 144 You administer a Microsoft SQL Server 2012 database. You have a SQL Server Agent job instance that runs using the service account. You have a job step within the job that requires elevated permissions. You need to ensure that the job step can run using a different user account. What should you use? A. A notification B. A schedule C. A job category D. A proxy Answer: D QUESTION 145 You maintain several databases on a 32-bit Microsoft SQL Server 2005 instance on a Windows Server 2008 R2 64-bit server. You need to migrate the databases to a 64-bit SQL Server 2012 instance on the same server. You also need to ensure that the new Transact-SQL functionality in SQL Server 2012 can be used in the database after the migration. What should you do? (Each correct answer presents part of the solution. Choose all that apply.) A. Perform a side-by-side installation of a 32-bit SQL Server 2012 instance. B. Perform a side-by-side installation of a 64-bit SQL Server 2012 instance. C. Perform an in-place upgrade to 64-bit SQL Server 2012. D. Detach the database from the old instance and attach it to the new instance. E. Change the compatibility level of the database. Answer: BDE QUESTION 146 You administer a Microsoft SQL Server 2012 instance. You discover that the SQL Agent Error Log file is rapidly growing in size. You need to ensure that the SQL Agent Error Log file does not grow rapidly when SQL Server agent jobs execute. What should you do? A. Execute the sp_cycle_agent_errorlog stored procedure. B. Configure event forwarding. C. Enable the Auto Shrink option on the master database. D. Enable the Auto Shrink option on the msdb database. E. Disable the Include execution trace messages feature. Answer: E QUESTION 147 You are a database administrator for a Microsoft SQL Server 2012 instance. You need to ensure that data can be replicated from a production server to two reporting servers in real time. You also need to ensure that data on the reporting server is always accessible. Which solution should you use? A. Availability Groups B. Extended Events C. Snapshot Replication D. Policy Based Management Answer: A QUESTION 148 You administer a Microsoft SQL Server 2012 database that contains a table named AccountTransaction. You discover that query performance on the table is poor due to fragmentation on the IDX_AccountTransaction_AccountCode non-clustered index. You need to defragment the index. You also need to ensure that user queries are able to use the index during the defragmenting process. Which Transact-SQL batch should you use? A. ALTER INDEX IDX_AccountTransaction_AccountCode ON AccountTransaction. AccountCode REORGANIZE B. ALTER INDEX ALL ON AccountTransaction REBUILD C. ALTER INDEX IDX_AccountTransaction_AccountCode ON AccountTransaction. AccountCode REBUILD D. CREATE INDEX IDXAccountTransactionAccountCode ON AccountTransaction. AccountCode WITH

DROP EXISTING Answer: A QUESTION 149 You administer a Windows 2008 server hosting an instance of Microsoft SQL Server 2012 Standard Edition. The server hosts a database named Orders. Users report that a query that filters on OrderDate is taking an exceptionally long time. You discover that an index named IX_OrderDate on the CustomerOrder table is heavily fragmented. You need to improve the performance of the IX_OrderDate index. The index should remain online during the operation. Which Transact-SQL command should you use? A. ALTER INDEX IX_OrderDate ON CustomerOrder DISABLE B. ALTER INDEX IX_OrderDate ON CustomerOrder ENABLE C. ALTER INDEX IX_OrderDate ON CustomerOrder REORGANIZE D. ALTER INDEX IX_OrderDate ON CustomerOrder REBUILD Answer: C QUESTION 150 You administer a Windows Azure SQL Database database named Orders. You need to create a copy of Orders named Orders_Reporting. Which Transact-SQL command should you use?

- ☐ A. CREATE DATABASE Orders_Reporting AS COPY OF Orders
- ☐ B. BACKUP DATABASE Orders TO DISK = 'D:\Orders.bak' MIRROR TO DISK = 'Orders_Reporting'
- ☒ C. BACKUP DATABASE Orders TO DISK = 'D:\Orders.bak' RESTORE DATABASE Orders_Reporting FROM DISK = 'D:\Orders.bak'
- ☐ D. BACKUP DATABASE Orders TO DISK = 'D:\Orders.bak' CREATE DATABASE Orders_Reporting FROM DISK = 'D:\Orders.bak'

A. Option A B. Option B C. Option C D. Option D Answer: A

Compare And Choose The Best **PassLeader 70-462 Brain Dumps**

Pass4sure	PL PassLeader	TEST KING
	 Leader of IT Certifications	
Banned By Microsoft Not Available	197 Q&As Price: \$99.99 Coupon Code -- CELEB	50 Q&As Price: \$124.99

<http://www.passleader.com/70-462.html>