

(New Version) Grasping All The New Cisco 400-101 Exam Questions and Answers And Passing Exam Doubtless (141-160)

How To Pass The New 400-101 Exam? PassLeader now is offering the newest and 100 percent pass ensure 400-101 526q braindumps, the latest updated 400-101 526q exam questions are the most accurate exam dumps with all the new changed questions, which will help you passing 400-101 exam easily and quickly. Now visit the our site [passleader.com](#) and get the valid 400-101 526q exam vce and pdf practice test and FREE VCE PLAYER! keywords: 400-101 exam,400-101 exam dumps,400-101 526q exam questions,400-101 pdf dumps,400-101 vce dumps,400-101 526q practice test,400-101 vce file,CCIE Routing and Switching Written Exam, v5.0

Compare And Choose The Best PassLeader 400-101 Brain Dumps		
		
↓	↓	↓
493 Q&As Price: \$249.99	526 Q&As Price: \$99.99 Coupon Code -- CELEB	Not Available Not In Stock

NEW QUESTION 141 Refer to the exhibit. Which statement about the route target for 192.168.1.0/24 is true?

```
ip vrf 10051
 rd 10.1.1.1:10051
 route-target export 6
 route-target import 6

ip access-list standard
 permit 192.168.1.0 0.0.0.0

route-map 10051-export p
 match ip address mgmt
 set extcommunity rt 6

route-map 10051-export p
 match ip address mgmt
 set extcommunity rt 6
```

A. Its route target is 64512:100010051. B. Its route targets are 64512:100010051, 64512:2002250, and 64512:3002300. C. Its route target is 64512:3002300. D. Its route targets are 64512:100010051 and 64512:3002300. E. Its route targets are 64512:2002250 and 64512:3002300. Answer: A

NEW QUESTION 142 Which two options are benefits of EIGRP OTP? (Choose two.)

A. It allows EIGRP routers to peer across a service provider without the service provider involvement. B. It allows the customer EIGRP domain to remain contiguous. C. It requires only minimal support from the service provider. D. It allows EIGRP neighbors to be discovered dynamically. E. It fully supports multicast traffic. F. It allows the administrator to use different autonomous system numbers per EIGRP domain. Answer: AB

NEW QUESTION 143 Which three options are best practices for implementing a DMVPN? (Choose three.)

A. Use IPsec in tunnel mode. B. Implement Dead Peer Detection to detect communication loss. C. Configure AES for encryption of transported data. D. Configure SHA-1 for encryption of transported data. E. Deploy IPsec hardware acceleration to minimize router memory overhead. F. Configure QoS services only on the head-end router. Answer: ABC

NEW QUESTION 144 Which IPv6 tunneling type establishes a permanent link between IPv6 domains over IPv4?

A. IPv4-compatible tunneling B. ISATAP tunneling C. 6to4 tunneling D. manual tunneling Answer: D

NEW QUESTION 145 Which three components comprise the structure of a pseudowire FEC element? (Choose three.)

A. pseudowire ID B. pseudowire type C. control word D. Layer 3 PDU E. header checksum F. type of service Answer: ABC

NEW QUESTION 146 In which two modes do IPv6-in-IPv4 tunnels operate? (Choose two.)

A. tunnel mode B. transport mode C. 6to4 mode D. 4to6 mode E. ISATAP mode Answer: AB

NEW QUESTION 147 Which VPN technology requires the use of an external key server?

A. GETVPN B. GDOI C. SSL D.

DMVPN E. IPsec F. L2TPv3 Answer: A NEW QUESTION 148 Which three roles does a key server perform when used with GETVPN? (Choose three.) A. It authenticates group members. B. It manages security policies. C. It creates group keys. D. It distributes multicast replication policies. E. It distributes multicast replication keys. F. It configures and routes the GDOI protocol. Answer: ABC NEW QUESTION 149 Which two Cisco IOS AAA features are available with the local database? (Choose two.) A. command authorization B. network access authorization C. network accounting D. network access authentication Answer: AD NEW QUESTION 150 What is the most secure way to store ISAKMP/IPSec preshared keys in Cisco IOS? A. Use the service password-encryption command. B. Encrypt the ISAKMP preshared key in secure type 5 format. C. Encrypt the ISAKMP preshared key in secure type 7 format. D. Encrypt the ISAKMP preshared key in secure type 6 format. Answer: D

Compare And
Pass4sure
↓
493 Q&As
Price: \$249.9

<http://www.passleader.com/400-101.html> NEW QUESTION 151 Which two statements about the protected ports feature and the private VLAN feature are true? (Choose two.) A. The protected ports feature is limited to the local switch. B. The protected ports feature can isolate traffic between two "protected" ports on different switches. C. The private VLAN feature is limited to the local switch. D. The private VLAN feature prevents interhost communication within a VLAN across one or more switches. Answer: AD NEW QUESTION 152 Which two features are used for inspection when IPv6 address glean is enabled? (Choose two.) A. DHCP messages B. ND messages C. ICMPv6 messages D. UDP messages E. TCP messages Answer: AB NEW QUESTION 153 Refer to the exhibit. Which statement about the R1 configuration is true?

```
R1#show run

ip ssh time-out 30
ip ssh authentication-retries 2

access-list 10 permit 10.1.1.2
no cdp log mismatch duplex

control-plane
www.passleader.com
line con 0
  exec-timeout 5 30
  logging synchronous
line aux 0
line vty 0 4
  access-class 10 in
  login
  transport input ssh
```

A. It permits host 10.1.1.2 to establish a Telnet connection to R1. B. It limits remote hosts to two SSH connection attempts. C. SSH connections to R1 will log out after a 5-minute idle interval. D. Hosts that reside on network 10.0.0.0/8 can SSH to R1. E. The R1 timeout for outgoing SSH connection attempts is 30 seconds. Answer: E NEW QUESTION 154 Which two statements about the default SNMP configuration are true? (Choose two.) A. The SNMP agent is enabled. B. The SNMP trap receiver is configured. C. All SNMP notification types are sent. D. SNMPv1 is the default version. E. SNMPv3 is the default version. Answer: CD NEW QUESTION 155 Which two statements about logging are true? (Choose two.) A. Log messages are sent to the console port by default. B. Log messages are displayed in a Telnet session by default. C. Interface status changes are logged at the Notification level. D. Interface status changes are logged at the Informational level. E. System restart messages are logged at the Critical level. F.

Reload requests are logged at the Notification level. Answer: AC NEW QUESTION 156 Refer to the exhibit. Your network is suffering excessive output drops. Which two actions can you take to resolve the problem? (Choose two.)

```
access-switch-1#show interface fastethernet0/9
FastEthernet0/9 is up, line protocol is up
Hardware is Fast Ethernet, address is 000000000000
Auto-duplex, Auto-speed, media type is RJ45
Last clearing of "show interface" counters never
Input queue: 0/75/0/0 (size/max/drops/flushes)
output queue: 0/0/0/0 (size/max/drops/flushes)
queue: 0 threshold1 threshold2 threshold3 threshold4
queue 0: 0 0 0 0 0
queue 1: 23164955 35924645 0 0 0
queue 2: 0 0 0 0 0
queue 3: 0 0 0 0 0
```

A. Install a switch with larger buffers. B. Configure a different queue set.
C. Reconfigure the switch buffers. D. Configure the server application to use TCP.
E. Update the server operating system. Answer: AB NEW QUESTION 157 Refer to the exhibit. If the remaining configuration uses default values, what is the expected output of the show mls qos queue-set command?

```
mls qos queue-set output 1
mls qos queue-set output 2
mls qos queue-set output 3
```

A.

Queueset: 1					
Queue	:	1	2	3	4

buffers	:	25	25	25	25
threshold1:	:	100	80	400	60
threshold2:	:	100	90	400	100
reserved	:	50	100	100	100
maximum	:	400	100	800	100

B.

Queueset: 1					
Queue	:	1	2	3	4

buffers	:	25	25	25	25
threshold1:	:	100	80	400	60
threshold2:	:	100	90	400	100
reserved	:	50	100	100	100
maximum	:	100	100	800	100

C.

Queueset: 1					
Queue	:	1	2	3	4

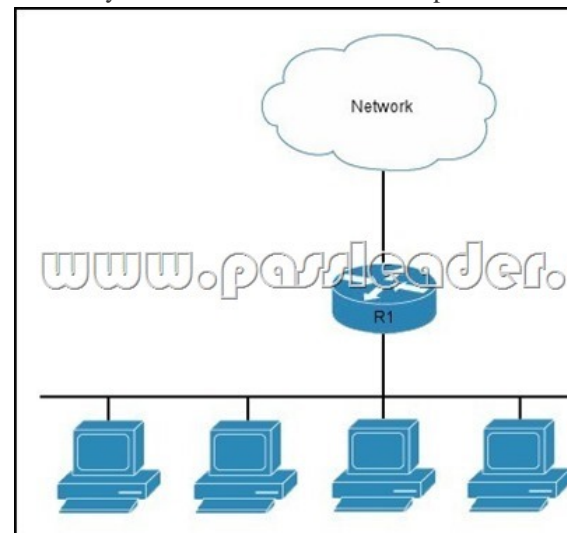
buffers	:	25	25	25	25
threshold1:	:	50	80	400	60
threshold2:	:	50	90	400	100
reserved	:	50	100	100	100
maximum	:	400	100	800	100

D.

Queueset: 1					
Queue	:	1	2	3	4

buffers	:	25	25	25	25
threshold1:	:	100	80	400	60
threshold2:	:	100	90	400	100
reserved	:	100	100	100	100
maximum	:	400	100	800	100

Answer: A NEW QUESTION 158 Which two statements about HSRP are true? (Choose two.) A. Its virtual MAC is 0000.0C07.Acxx. B. Its multicast virtual MAC is 0000.5E00.01xx. C. Its default configuration allows for pre-emption. D. It supports tracking. E. It supports unique virtual MAC addresses. Answer: AD NEW QUESTION 159 Which two statements about the client-identifier in a DHCP pool are true? (Choose two.) A. It specifies a unique identifier that is used only for DHCP requests. B. It is specified by appending 01 to the MAC address of a DHCP client. C. It specifies a hardware address for the client. D. It specifies a unique identifier that is used only for BOOTP requests. E. It requires that you specify the hardware protocol. Answer: AB NEW QUESTION 160 Refer to the exhibit. If router R1 is functioning as a DHCPv6 server and you enter the command show ipv6 dhcp binding, which two options are pieces of information in the output? (Choose two.)



A. The IA PD B. The DUID C. The prefix pool D. The DNS server E. The Rapid-Commit setting Answer: AB

Compare And Choose Th

Pass4sure PL

493 Q&As

Price: \$249.99

<http://www.passleader.com/400-101.html>