

CCNA Simulator - Packet Tracer 5.2

Packet Tracer version 5.2 is a minor new release that includes new and additional functionality not available in Packet Tracer version 5.1. The CCNA Security curriculum requires the use of Packet Tracer 5.2. While there are no curricula requirements that make it necessary to move to version 5.2 for CCNA Discovery or CCNA Exploration, you may want to upgrade to the new version to take advantage of the improvements and new features included in this release.

Packet Tracer 5.2 supports activities authored in Packet Tracer 4.0, 4.1, 4.11, 5.0 and 5.1. Packet Tracer 5.1 has been replaced by Packet Tracer 5.2 and is no longer available for download. Please note that the last two courses of the CCNA Discovery and CCNA Exploration curricula require Packet Tracer version 4.11 at a minimum, and both curricula are fully compatible with Packet Tracer 5.2.

You can download both the Packet Tracer application and tutorial files in one download package. However, due to the large file size it is faster to download the application by itself, if that is all you need. Choose the download option appropriate for your needs.

Figure 1. Packet Tracer's drag-and-drop interface allows students to configure and validate system architecture

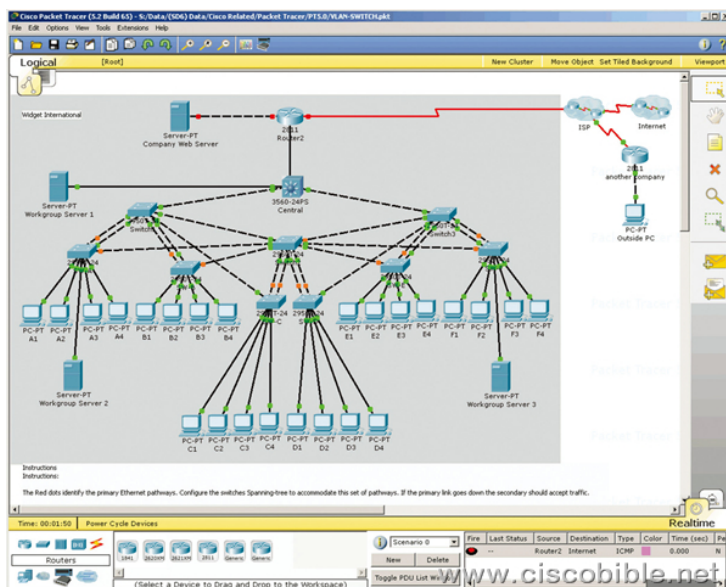


Figure 2. Multiuser games provide fun learning opportunities for collaboration and competition

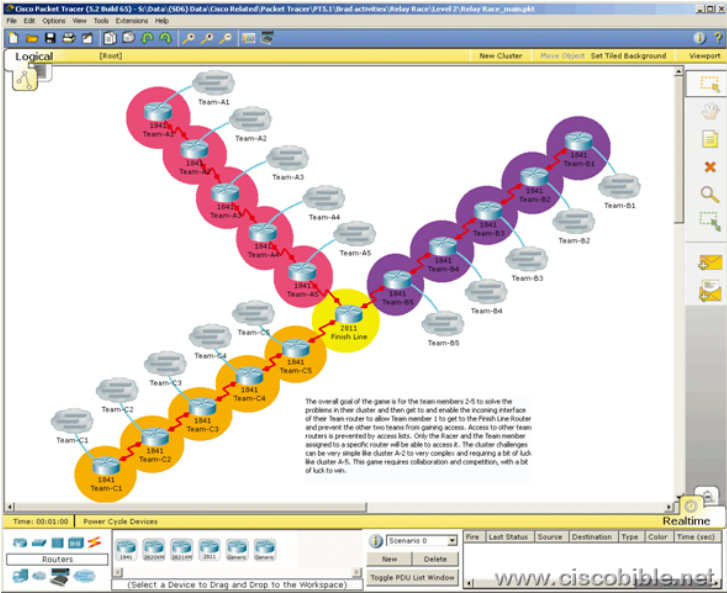


Figure 3. The physical workspace provides a graphical view of the logical network

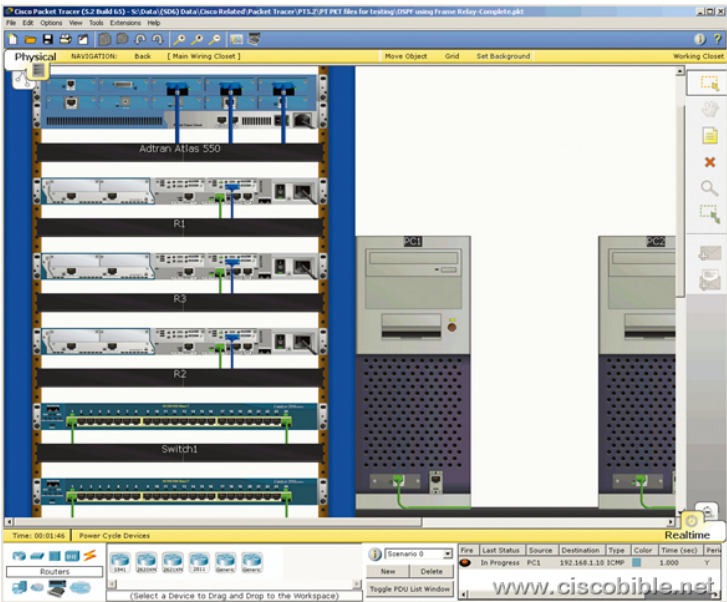
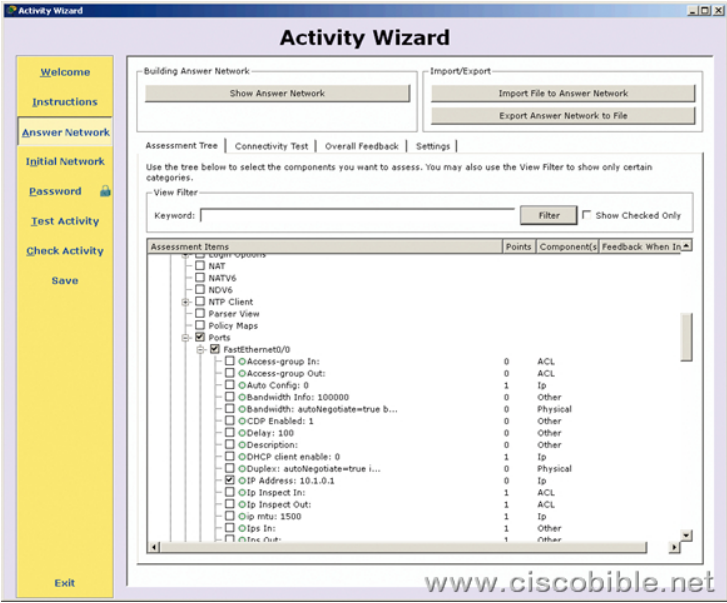


Figure 4. The Activity Wizard enables the creation of customized learning activities



Windows Full Edition ?> (Torrent)



Linux-Ubuntu Full Edition ?>



[This hidden content is only available for our VIP member. Become VIP Member NOW